

OREGON STATE SOFTBALL

Ten NCAA Regional Appearances • 2006 Women's College World Series

Oregon State Athletic Communications • John Cantalupi • john.cantalupi@oregonstate.edu • Cell: 650-743-7154

2012 SCHEDULE AND RESULTS

February

9	vs. BYU [RV/RV] ⁽¹⁾	W, 22-5 (5)
	vs. Idaho State ⁽¹⁾	W, 16-3 (5)
10	vs. Georgia Tech [RV/23] ⁽¹⁾	L, 9-8
	vs. McNeese State ⁽¹⁾	L, 3-2 (8)
11	vs. Nebraska [21/t20] ⁽¹⁾	W, 11-3 (6)
17	vs. UC Santa Barbara ⁽²⁾	W, 6-0
	at San Diego State [NR/RV] ⁽²⁾	L, 7-6 (9)
18	vs. Notre Dame [RV/RV] ⁽²⁾	W, 3-2
	at San Diego ⁽²⁾	W, 7-2
19	vs. Central Florida ⁽²⁾	W, 2-1
23	vs. Iowa State ⁽³⁾	W, 5-4
	vs. New Mexico [RV/NR] ⁽³⁾	L, 10-6
24	vs. Ohio State ⁽³⁾	W, 4-3
	vs. Iowa ⁽³⁾	W, 2-1 (8)
26	vs. Colorado State ⁽³⁾	W, 4-2
27	vs. Maine (DH) [Fullerton, Calif.]	W, 4-0 / W, 13-0 (5)

March

2	vs. Indiana ⁽⁴⁾	W, 4-3
	vs. Northwestern ⁽⁴⁾	W, 5-3
3	vs. Michigan State ⁽⁴⁾	W, 11-6
	at Cal State Fullerton ⁽⁴⁾	W, 5-2
4	vs. Florida International ⁽⁴⁾	L, 4-1
8	vs. North Carolina [24/23] ⁽⁵⁾	W, 8-1
	vs. Long Beach State ⁽⁵⁾	W, 12-2
9	vs. Pittsburgh ⁽⁵⁾	W, 3-2
10	vs. Michigan State ⁽⁵⁾	W, 5-2
	vs. Notre Dame ⁽⁵⁾	L, 8-1
11	vs. Harvard [Northridge, Calif.]	L, 3-2
24	Oregon [17/15] *	L, 8-2
25	Oregon [17/15] *	W, 5-4 (8)
26	Oregon [17/15] *	W, 7-1
28	at Cal State Northridge (DH)	W, 13-1 (5) / W, 5-1
30	at UCLA [14/14] *	L, 8-4
31	at UCLA [14/14] *	L, 8-0 (5)

April

1	at UCLA [14/14] *	W, 7-5
10	Arizona State [4/3] * (DH)	W, 4-2 (9) / L, 3-2
11	Arizona State [4/3] *	Canceled
13	at Stanford [15/18] *	L, 8-4
14	at Stanford [15/18] *	L, 7-0
15	at Stanford [15/18] *	L, 8-0 (5)
20	Washington [9/11] *	W, 4-3
21	Washington [9/11] *	L, 7-6 (9)
22	Washington [9/11] *	W, 3-2
24	Portland State (DH)	W, 2-0 / W, 3-2
27	at Utah *	W, 10-2
28	at Utah *	L, 8-6
29	at Utah *	W, 5-4

May

4	California [1/1] *	L, 9-1 (5)
5	California [1/1] *	L, 4-2
6	California [1/1] *	L, 4-1
10	at Arizona [17/16] *	L, 12-4 (6)
11	at Arizona [17/16] *	W, 4-0
12	at Arizona [17/16] *	L, 3-1
18	vs. Tulsa [RV/25] ⁽⁶⁾	3 p.m. PT / 5 p.m. CT
19	vs. Oklahoma [4/4] / Lehigh ⁽⁶⁾	TBD

(1) - Kajikawa Classic; Tempe, Ariz. ; (2) - Campbell/Cartier Classic; San Diego, Calif. ; (3) - Cathedral City Classic; Cathedral City, Calif. ; (4) - DeMarini Invitational; Fullerton, Calif. ; (5) - Long Beach State Invitational; Lakewood, Calif. ; (6) - NCAA Regional; Norman, Okla.

* - Pac-12 game; Home games in Bold

[#/#] - Indicates national ranking (NFCA/USA Softball)

NCAA Regional • May 18 - May 20 • Marita Hynes Field • Norman, Okla.



vs. #25 Tulsa Golden Hurricane (41-12); Friday, May 18; 3:00 p.m. PST/5:00 p.m. CST

vs. #4 Oklahoma Sooners (45-8) or Lehigh Mountain Hawks (40-17); Saturday, May 19; TBD

vs. TBD; Saturday, May 19; TBD [if necessary]

vs. TBD; Sunday, May 20; TBD [if necessary]

vs. TBD; Sunday, May 20; TBD [if necessary]

The Weekend: The 24th-ranked Oregon State softball team will make its return to postseason play when it travels to Norman, Okla. to participate in the NCAA Regional hosted by the University of Oklahoma. With a double-elimination format, the Beavers open against Tulsa on Friday, May 18 at 3 p.m. PT/5 p.m. CT. Depending on its result against the Golden Hurricane, Oregon State will play either the host Sooners or Lehigh on Saturday.

Friday's winners will square off in Saturday's first of three games at 1 p.m. while Friday's two losers will face off in an elimination game at 3:30 p.m. The loser of Saturday's first game will take on the winner of the day's second game in an elimination game. The winner of Saturday's final game will take on the winner of the day's first game on Sunday at 1 p.m. with an if-necessary rematch scheduled for 3:30 p.m.

Tracking the Beavs: Live stats will be available online via GameTracker at osubeavers.com. A live webcast of all games can be accessed soonersports.com.

Social Media: Stay informed with Oregon State softball social media. Follow @OregonStateSB on Twitter for all game day information, including score updates, photos and observations. "Like" [facebook.com/OregonStateSB](https://www.facebook.com/OregonStateSB) to stay in touch with all OSU stories and other great news and notes.

Postseason Prowess: Oregon State, which advanced to nine consecutive NCAA Regionals beginning in 1999, had not heard its name called since 2007. With the announcement, the Beavers became one of only 43 softball programs to advance to the postseason on at least 10 occasions. There are 289 total schools that sponsor the sport at the Division I level.

Beating The Best: The team's win over No. 16 Arizona on May 11 was OSU's ninth over a ranked opponent this season, its most over top-25 teams since its 2006 WCWS team claimed 17 such victories. Oregon State has also defeated 11 teams with an RPI in the top 50 in the country.

Double Digits: In scoring 10 runs against Utah on April 27, Oregon State pushed more than 10 runs across the plate for the eighth time this season, which is second in team history. The school record dates back to 1978 when OSU scored 10 or more 11 times in 25 games. The Beavers' 10-run output was the team's most in a conference game

Oregon State At A Glance NCAA Regional

Overall Record	34-21
Pac-12 Record	9-14
Home Record	7-6
Road Record	8-9
Neutral Record	19-6
Streak	Lost 1
Last 5 Games	1-4
Last 10 Games	4-6
Day Record	29-15
Night Record	5-6

All-Time vs. Tulsa.....4-0
Last..... W, 5-1; 3/25/01; New Mexico State Tourn.

All-Time vs. Oklahoma.....2-10
Last..... L, 6-1; 2/26/10; Cathedral City Classic

All-Time vs. Lehigh.....0-0
Last..... N/A

Head Coach Kirk Walker

18th Year at OSU	592-488-3
All-Time vs. Tulsa.....	4-0
All-Time vs. Oklahoma	2-9
All-Time vs. Lehigh.....	0-0

Oregon State History

All-Time Record	942-899-6
Best record after 55 games	41-14 (2006)
Record after 55 games, 2011	19-28 (Only played 47)
Record after 55 games, 2010	24-31



2012 Oregon State Softball



<http://twitter.com/OregonStateSB>



<http://www.facebook.com/OregonStateSB>

2012 QUICK FACTS

The University

Location Corvallis, Ore.
 Founded 1868
 Enrollment 23,761
 Nickname Beavers
 Colors Orange (PMS 165) and Black
 Affiliation NCAA Division I
 Conference Pac-12
 President Dr. Edward Ray
 Athletic Faculty Representative... Dr. Joseph Spatafora
 Director of Athletics Bob De Carolis
 Senior Women's Administrator Marianne Vydra
 Athletic Department Phone 541-737-2547
 Ticket Office Phone 800-GO-BEAVS
 Home Facility OSU Softball Complex
 Surface Grass
 Capacity 750
 Web Site www.osubeavers.com

Oregon State Softball History

First Year 1975 (37 seasons)
 All-Time Record 942-899-6 (.512)
 All-Time Pac-10 Record (since 1987)... 138-418 (.248)
 Pac-10 Championships One (2005)
 NCAA Tournament Appearances Ten (27-19, 587)
 Last NCAA Tournament Appearance 2012
 NCAA WCWS Appearances One (2006)

Staff Information

Head Coach Kirk Walker (18th Season)
 Alma Mater UCLA, 1988
 OSU Record 592-488-3 (.548)/17+ Seasons
 Career Record 592-488-3 (.548)/17+ Seasons
 Assistant Coach Laura Berg (First Season)
 Alma Mater Fresno State, 1998
 Assistant Coach Geoff Hirai (First Season)
 Alma Mater Hawai'i-Hilo, 1998
 Volunteer Assistant Mikiah Smith (Sixth Season)
 Alma Mater Oregon State, 2001
 Director of Operations Heather Smith (11th Season)
 Alma Mater Oregon State, 1998
 Softball Office Phone (541) 737-2789
 Athletic Trainer Heather Elkinton
 Alma Mater Oregon State, 2004

Team Information

Letterwinners Returning/Lost 15/4
 Pitchers Returning/Lost 3/0
 Newcomers 5
 2011 Record 19-28
 2011 Conference Record/Finish 2-19/Eighth

since 2010, when OSU plated the same number in a 10-8 victory over Stanford on April 11. Including the Utah performance, the Beavers have only scored 10 or more runs in conference games five times since 1994.

Oregon State's seven-run seventh in in game one against Utah on April 27 also marked the largest run total for the Beavers in any one frame in a Pac-12 game since they scored 10 in the ninth inning of a 15-5 win over Stanford on April 5, 2003.

Clean Slate: Oregon State finished its regular season with a 34 wins against 21 losses. That record through 55 games is the program's best mark since its 2007 team started that campaign 36-19. Oregon State has also now won 30 or more games in 12 of its 38 seasons as a Division I program. OSU last reached the mark in that 2007 season when it finished 41-23 en route to an NCAA Regional appearance in Ann Arbor, Mich., the team's last postseason berth.

Offensive Fireworks: Oregon State's offensive production is on pace to challenge a number of marks in the Beavers' record books. OSU has 283 runs so far this season, which is the second most in school history for any one year. The school record dates from 2007 when OSU plated a runner 296 times in 64 games. The Beavers are also on pace to threaten the school record for RBI (262 - 2007). If the season ended today, the team's .275 batting average would be third all-time at OSU.

Record-Setting Performance: Oregon State's 22 runs in the season-opener against BYU are the most in program history and the 16-run second inning is a school record as well. In that second frame, the team launched five home runs, tying the school mark for an entire game. Senior Paige Hall hit two home runs, including a grand slam, and Erin Guzy and Desiree Beltran smacked the school's first back-to-back jacks since 2009. The five home runs in one inning ties an NCAA record and is the fifth time it's ever been done. Creighton was the last school to turn the trick when they did it in the first frame against North

Beavers	2012 Statistics	Tulsa
34-21	Record	41-12
.275	Batting	.311
5.15	Runs/Game	5.21
7.15	Hits/Game	8.47
4.56	RBI/Game	4.68
.401	Slugging	.441
3.45	Walks/Game	2.97
.375	OBP	.388
1.05	SB/Game	1.02
3.37	ERA	2.38
.246	Opp. BA	.221
5.10	K/Game	6.42

Beavers	2012 Statistics	Oklahoma
34-21	Record	45-8
.275	Batting	.316
5.15	Runs/Game	6.32
7.15	Hits/Game	8.21
4.56	RBI/Game	5.49
.401	Slugging	.548
3.45	Walks/Game	3.43
.375	OBP	.408
1.05	SB/Game	1.06
3.37	ERA	1.17
.246	Opp. BA	.166
5.10	K/Game	9.42

2012 Oregon State Roster

No.	Player	Pos.	B/T	Ht.	Yr.	Exp.	Hometown	Previous School
1	Ya Garcia	2B	L/R	5-3	Fr.	HS	Fairfield, Calif.	Angelo Rodriguez HS
2	Maggie Doremus	OF/UTIL	L/R	5-9	Jr.	2V	San Diego, Calif.	Mount Carmel HS
4	Elizabeth Santana	SS	R/R	5-3	Jr.	TR	Fontana, Calif.	UC Davis
6	Erin Guzy	1B	L/L	5-9	Sr.*	3V	Beaverton, Ore.	Southridge HS
7	Hannah Bouska	OF	L/R	5-7	So.	1V	Keizer, Ore.	McNary HS
8	Marina Demore	P	R/R	5-6	Jr.	2V	Vancouver, British Columbia	Point Grey Secondary
9	Ally Kutz	C	R/R	5-10	Jr.	2V	Mt. Vernon, Wash.	Mt. Vernon HS
11	Ashley Sanchez	OF	L/L	5-1	Sr.	3V	Alameda, Calif.	Alameda HS
13	Desiree Beltran	3B	R/R	5-8	Jr.*	1V	Agoura Hills, Calif.	Sacramento State
14	Isabelle Batayola	C/UTIL	L/R	5-7	So.	1V	Seattle, Wash.	Roosevelt HS
16	Mary Claire Brenner	OF	R/R	5-11	Sr.	3V	Portland, Ore.	Jesuit HS
17	Madison Bundy	UTIL	R/R	5-5	Fr.	HS	Anacortes, Wash.	Anacortes HS
20	Bailee Niehus	1B/OF	L/L	6-0	So.*	1V	McMinnville, Ore.	McMinnville HS
22	Paige Hall	DP/P	R/R	5-11	Sr.	3V	Portland, Ore.	Jesuit HS
24	Dani Gilmore	CF/C	L/L	5-8	Fr.	HS	West Hills, Calif.	El Camino Real HS
25	Emily Richardson	IF	R/R	5-5	Sr.	1V	Sacramento, Calif.	Cosumnes River College
32	Lea Cavestany	OF	L/R	5-5	Jr.	2V	Pittsburg, Calif.	Concord HS
44	Nikki Chandler	IF	R/R	5-8	Sr.	3V	Houston, Texas	Langham Creek HS
55	Tina Andreana	P	R/R	5-7	Jr.	1V	Oakville, Ontario	Western Texas College
99	Aryn Feickert	P	R/R	5-7	Fr.	HS	Lancaster, Calif.	Highland HS

* used redshirt year

Tina Andreana (ANNE-dre-ANNE-uh)
 Hannah Bouska (Boo-ska)
 Lea Cavestany (LAY-uh CAV-uh-STAH-knee)
 Marina Demore (Duh-MOOR)

Maggie Doremus (Door-EE-mus)
 Aryn Feickert (Erin)
 Dani Gilmore (DAN-ee)
 Ya Garcia (Yaw)

Erin Guzy (GUZ-ee)
 Geoff Hirai (HE-rai)
 Ally Kutz (COU(LD)-T-S)
 Bailee Niehus (KNEE-us)



2012 Oregon State Softball

2012 NATIONAL RANKINGS

USA TODAY/NFCA DIVISION I WEEK 14 TOP 25 (Released May 15)

School	Record	Points	Last
1. California (30)	50-4	750	1
2. Arizona St.	46-7	705	2
3. Alabama	50-7	700	3
4. Oklahoma	45-8	662	4
5. Tennessee	46-10	614	5
6. Florida	46-11	591	7
7. La.-Lafayette	49-4	562	6
8. Texas	42-10	538	8
9. Louisville	53-3	509	9
10. Missouri	43-12	475	10
11. Georgia	41-15	448	11
12. Oregon	39-15	427	13
13. Hawai'i	44-7	377	11
14. Texas A&M	39-16	354	16
15. UCLA	36-18	335	14
16. Stanford	38-17	309	15
17. Arizona	35-17	284	17
18. Washington	36-17	243	18
19. USF	45-11	189	19
20. Florida St.	46-14	161	20
21. Michigan	39-15	141	22
22. North Carolina	41-13	135	21
23. Baylor	33-20	70	23
24. Texas Tech	40-15	65	25
25. Syracuse	40-14	30	24

OTHERS RECEIVING VOTES: *BYU 22; Tulsa 19; Massachusetts 11; Georgia Tech 9; LSU 6*

ESPN.COM/USA SOFTBALL WEEK 14 TOP 25 (Released May 15)

School	Record	Points	Last
1. California (20)	50-4	500	1
2. Arizona State	46-7	469	2
3. Alabama	50-7	466	3
4. Oklahoma	45-8	443	4
5. Tennessee	46-10	409	5
6. Florida	46-11	397	7
7. Louisville	53-3	348	8
8. Texas	42-10	339	10
9. Missouri	43-12	338	9
10. Louisiana-Lafayette	49-4	336	6
11. Georgia	41-15	302	11
12. Oregon	39-15	297	12
13. Texas A&M	39-16	275	14
14. UCLA	36-18	227	15
15. Arizona	35-17	222	16
16. Hawaii	44-7	212	13
17. Stanford	38-17	159	17
18. Washington	36-17	140	18
19. Michigan	39-15	96	23
20. Florida State	46-14	94	19
21. North Carolina	41-13	84	21
22. South Florida	45-11	79	20
23. Texas Tech	40-15	70	22
24. Oregon State	34-21	41	24
25. Tulsa	41-12	35	NR

OTHERS RECEIVING VOTES: *Syracuse (29); Georgia Tech (26); UMASS (18); Kentucky (13); Notre Dame (12); Virginia Tech (8); LSU (7); Baylor (7); BYU (1); South Alabama (1)*

Oregon State's 2012 opponents are *italicized*.

Oregon State NCAA RPI = 24
(as of 5/14)

Dakota State on April 5, 2010. The 16 runs scored in the second are tied for the sixth-most in NCAA history in any one inning.

Fab Frosh: Dani Gilmore is having one of the more impressive seasons for a Beaver freshman in recent memory. Through 55 games she is batting .313 (52-for-166) with nine home runs and 33 RBI. Her 42 runs scored and 13 stolen bases place her for 4th and tied for 6th in single-season history at Oregon State in each respective category. Her nine long balls in her first year in Corvallis are the most for any Oregon State freshman since All-American Tarrah Beyster launched 12 in 1997.

Stay Hot: Junior Elizabeth Santana has been a huge factor in OSU's strong play this season. In the upset of No. 3 Arizona State, she went 2-for-3 with a game-tying solo home run in the seventh and a walk-off two-run job in the ninth. It was Oregon State's first walk-off long ball since Nikki Chandler hit one against UC Davis on March 5, 2010 in a 5-3 win. Since the Beavers' played their first Pac-12 game on March 24, Santana is batting a robust .349 (29-for-83) with four home runs, 16 RBI and 17 runs scored. The last Oregon State player to best her 61 hits so far this season was All-American Cambria Miranda, who had 66 in 2007.

In those same 27 games, senior Erin Guzy has also put together the best stretch of her career, batting .325 (25-for-77) with five doubles, eight runs scored and nine RBI. Against Utah on April 29, Guzy hit the 30th double of her career, which places her 10th all-time at OSU.

Making Her Mark: Senior Paige Hall has been a dual threat for Oregon State throughout her entire career and is looking to cement her legacy in the Beaver record books in 2012. The Portland native notched her 13th win of the season against Portland State on April 24 and in doing so became just the sixth player in OSU history to reach the 50-win plateau for her career (51-43). Her 381 strikeouts in 578.1 innings put her fifth all-time at OSU. Additionally, her five saves this year are tied for third in program history for a single season, are tops in the Pac-12 and tied for eighth in the nation.

Demore Dealing: Junior Marina Demore had the best start of her career against No. 16 Arizona on May 11, limiting the Wildcats to only four hits in her third-ever complete-game shutout. She allowed only a bloop single through the first five innings in holding the Wildcats scoreless for only the fourth time all season. The four hits Arizona scraped together were its third fewest on the year. In 2011 she tossed two moderately comparable games, blanking Utah State 9-0 in five innings on March 19 and shutting out Southern Miss for nine frames in a 1-0 victory on March 5. Demore ended up throwing 12 1/3 consecutive scoreless innings against Arizona. Earlier this season during non-conference play she tossed 23 scoreless frames in a row.

Welcome Back: Following a renaissance on the diamond this season, Oregon State has worked its way back into the top-25 for the first time in over four years. OSU, now ranked for seven straight weeks, sits at No. 24 in the ESPN.com/USA Softball poll. Prior to this year, Oregon State was most recently ranked on February 12, 2008 when it came

Beavers	2012 Statistics	Lehigh
34-21	Record	40-17
.275	Batting	.313
5.15	Runs/Game	4.75
7.15	Hits/Game	8.32
4.56	RBI/Game	4.25
.401	Slugging	.439
3.45	Walks/Game	2.42
.375	OBP	.377
1.05	SB/Game	0.67
3.37	ERA	1.69
.246	Opp. BA	.204
5.10	K/Game	5.56

Friday, May 18

5 p.m. -- Tulsa vs. Oregon State
7:30 p.m. -- Oklahoma vs. Lehigh

Saturday, May 19

1 p.m. -- Winner Game 1 vs. Winner Game 2
3:30 p.m. -- Loser Game 1 vs. Loser Game 2
6 p.m. -- Winner Game 4 vs. Loser Game 3

Sunday, May 20

1 p.m. -- Winner Game 3 vs. Winner Game 5
3:30 p.m. -- Winner Game 6 vs. Loser Game 6 (if necessary)

2012 PAC-12 CONFERENCE STANDINGS (FINAL)

TEAM	PAC-12				OVERALL				LAST 10	STREAK
	W	L	T	PCT.	W	L	T	PCT.		
California	21	3	0	.875	50	4	0	.926	9-1	L 1
Arizona State	18	4	0	.818	46	7	0	.868	8-2	W 1
Oregon	13	9	0	.591	39	15	0	.722	6-4	W 2
UCLA	12	12	0	.500	36	18	0	.667	4-6	L 2
Arizona	12	12	0	.500	35	17	0	.673	5-5	W 1
Stanford	11	13	0	.458	38	17	0	.691	6-4	W 2
Oregon State	9	14	0	.391	34	21	0	.618	4-6	L 1
Washington	7	16	0	.304	36	17	0	.679	2-8	L 7
Utah	2	22	0	.083	28	28	0	.500	3-7	L 2



2012 Oregon State Softball

HEAD COACH KIRK WALKER



18TH SEASON
UCLA '88

- All-time winningest coach in Oregon State softball history
- Two-time Pac-10 Conference Coach of the Year
- Two-time Speedline/NFCA Pacific Region Coaching Staff of the Year

561-469-3 (.545)

- Nine consecutive NCAA postseason app. (1999-2007)
- 2006 Women's College World Series berth
- Eight 40-plus win seasons
- Eight top 25 final national rankings
- 10 All-Americans
- 27 All-Region honorees
- 75 All-Pac-10 honorees
- One of 12 coaches named to the USA Softball National Team Coaches Pool through the 2004 Olympics in Athens
- Served four years as an assistant coach for the USA Softball Elite and National Teams

Walker's Year-By-Year at Oregon State

Year	Record	Pct.	Conf.
1995	13-41	.241	4-24
1996	15-35	.300	3-22
1997	29-34-1	.461	6-21
1998	27-28	.491	8-20
1999	47-25	.625	14-14
2000	40-21-1	.645	7-14
2001	44-24-1	.645	10-10
2002	40-25	.615	7-14
2003	36-31	.537	5-16
2004	44-28	.611	4-17
2005	43-16	.729	13-8
2006	43-16	.729	10-10
2007	41-23	.641	10-11
2008	28-31	.475	6-15
2009	25-30	.455	4-17
2010	24-31	.436	4-17
2011	19-28	.404	2-19
2012	34-21	.673	9-14
Totals	592-488-3	.548	126-283

Oregon State Then And Now

The Beavers' before and after Walker's arrival

	Before (1975-94)	Since (1995-2012)
Overall Record	350-411-3	592-488-3
No. Weeks in Top 25	0	135
Pac-10 Conference Titles	0	1
NCAA WCWS App.	0	1
NCAA Postseason App.	0	10
All-America Selections	1	10
All-Pac-10 Selections	5	75
Years Among Final Top 25	0	8
Years Among Final Top 10	0	2

Winningest Coaches in OSU History

1. Dale Thomas, Wrestling, 616-168-13; 34 yrs
2. Jack Riley, Baseball, 613-411-5; 22 yrs
3. Pat Casey, Baseball, 610-368-4; 17 yrs*
4. Amory "Slats" Gill, Men's Basketball, 599-392; 36 yrs
5. Kirk Walker, Softball, 592-488-3; 17+ yrs*

* active

in at 25th in both polls. The last time the program was any higher was in 2008's preseason rankings, which tabbed Kirk Walker's squad 18th (*USA Today/NFCA*) and 19th (*ESPN.com/USA Softball*), respectively. The most recent time OSU was featured in either poll this late in the season was in the final rankings of 2007 (June 20) when it finished the season as the 15th-best team in the country according to the *USA Today/NFCA* voters.

The national recognition first came on the heels of an impressive seven-game stretch which saw the Beavers claim two wins over then-No. 15 Oregon (5-4 (8); 7-1) on Monday, March 26 in addition to a road upset of then-No. 14 UCLA (7-5) on Sunday, April 1. Oregon State hadn't beaten three ranked teams in the same week in six years, since defeating No. 1 UCLA (2-0) and No. 14 Washington (3-2; 5-0) on three consecutive days in 2006 (April 21-23).

Taking Care Of Business: Following the wins over Portland State on April 24, OSU closed out the non-conference portion of its schedule with a 25-7 mark (.781). That represents the Beavers' highest number of non-league wins since 2007 (31) and their best winning percentage outside the Pac-12 since 2006 (.846).

Bearing Down On The Wildcats: The Beavers' 4-0 victory over No. 16 Arizona on May 11 was Oregon State's first in Tucson since 2005. It was also the program's first shutout in Pac-12 play since it downed California, 8-0 in six innings, on April 12, 2008. The last time the Beavers shutout a conference foe in a full seven-inning game was on April 27, 2007 in a 2-0 win against Washington.

Undercutting The Utes: The series win against Utah gave the Beavers their second consecutive Pac-12 series victory and third of the season. OSU had never won back-to-back series since the conference switched to the current format for league play in 2010, with three games in three days against the same opponent. In taking two of three from the Utes, Oregon State also won its third Pac-12 series of the year for the first time since 2007. This year the Beavers also won all but once in three-game sets against then-No. 15 Oregon and then-No. 9 Washington. In 2007 they did the same against Stanford, California and Washington.

The eight-run margin of victory in the opener (W, 10-2) was OSU's largest in a Pac-12 game in almost four years, going back to an 8-0 win in six innings against then-No. 22 California on April 12, 2008.

Hurting The Huskies: Oregon State's series victory over No. 9 Washington was only its second series victory over a top-10 team in the last six years. OSU took two of three from No. 7 Arizona State in 2010.

Cool Down Devils: The Beavers' triumph over defending national champion and No. 3 Arizona State was the program's first over a top-5 team since it defeated No. 3 UCLA, 5-3, on May 9, 2008.

California Love: The win over No. 14 UCLA on April 1 was exceptional in many respects. It was Oregon State's 11th all-time victory against the perennial powerhouse from Southern California and was only the Beavers' fourth win against the Bruins in Westwood. OSU last came away from Easton Stadium on top on April 21, 2006 in a 2-0 triumph over then-No. 1 UCLA.

Oregon State in the Polls

Week	NFCA	USA Softball
Pre	--	--
2/14	RV	--
2/21	--	--
2/28	RV	--
3/6	RV	RV
3/13	RV	RV
3/20	RV	RV
3/27	RV	RV
4/3	25	23
4/10	25	23
4/17	RV	24
4/24	RV	23
5/1	RV	22
5/8	--	24
5/15	--	24

Hitting Streaks			Reached Base Streaks		
	Longest	Current		Longest	Current
7 Bouska, Hannah	11	-	24 Gilmore, Dani	14	5
1 Garcia, Ya	8	-	6 Guzy, Erin	14	-
24 Gilmore, Dani	6	4	7 Bouska, Hannah	12	-
13 Beltran, Desiree	5	2	4 Santana, Elizabeth	11	4
32 Cavestany, Lea	5	1	1 Garcia, Ya	10	1
4 Santana, Elizabeth	5	4	22 Hall, Paige	10	-
6 Guzy, Erin	4	-	32 Cavestany, Lea	9	3
9 Kutz, Ally	4	-	9 Kutz, Ally	8	-
16 Brenner, Mary Claire	3	-	13 Beltran, Desiree	7	5
22 Hall, Paige	3	-	16 Brenner, Mary Claire	6	-
2 Doremus, Maggie	2	-	2 Doremus, Maggie	2	-
20 Batayola, Isabelle	1	1	20 Batayola, Isabelle	1	1



2012 Oregon State Softball

NCAA POSTSEASON RESULTS

NCAA REGIONAL TOURNAMENT

9 Appearances — 41 Games

1999 • at Baton Rouge, La.

5/20	Southern Miss	L	0-1
5/21	LSU	W	3-0
5/22	Long Beach State	W	3-0
5/23	Southern Miss	W	9-1 (6)
5/23	Southern Miss	L	0-4

2000 • at Norman, Okla.

5/18	Northwestern	W	1-0 (10)
5/19	Arkansas	W	4-1
5/20	Oklahoma	L	3-5
5/20	Northwestern	W	4-0
5/21	Oklahoma	L	2-3

2001 • at Tuscaloosa, Ala.

5/17	South Florida	L	1-2
5/18	Chattanooga	W	13-0 (5)
5/18	Alabama	L	0-1

2002 • at Iowa City, Iowa

5/16	Wisconsin	W	1-0
5/17	Notre Dame	W	2-0
5/18	Nebraska	L	0-7
5/18	Notre Dame	L	0-2

2003 • at Gainesville, Fla.

5/15	Florida	L	2-3
5/16	Florida State	W	2-1
5/16	South Florida	W	8-0
5/17	Florida Atlantic	W	7-3
5/17	Texas-Arlington	W	2-0
5/18	Oklahoma	L	2-7

2004 • at Ann Arbor, Mich.

5/20	Bowling Green	W	7-0
5/22	Tennessee	W	4-0
5/22	Michigan	L	2-3
5/23	UIC	W	6-5
5/23	Michigan	W	1-0
5/24	Michigan	L	2-5

27-19 Overall 3-2 in Norman, Okla.

2005 • at Madison, Wis.

5/20	Wis.-Green Bay	L	0-1
5/21	Wisconsin	W	8-2
5/21	Wis.-Green Bay	W	5-0
5/22	DePaul	W	7-0
5/22	DePaul	L	6-8

2006 • at Corvallis, Ore.

5/19	Nevada	W	2-1
5/20	No. 19 Baylor	W	5-3
5/21	No. 19 Baylor	W	3-1

2007 • at Ann Arbor, Mich.

5/18	Louisville	L	0-8 (5)
5/19	Eastern Michigan	W	6-1
5/19	Louisville	W	11-4
5/20	No. 10 Michigan	L	0-7

NCAA SUPER REGIONAL TOURNAMENT GAMES

1 Appearance — 3 Games

2006 • at Corvallis, Ore.

5/26	No. 6 California	L	1-2
5/28	No. 6 California	W	3-0
5/28	No. 6 California	W	1-0

NCAA WOMEN'S COLLEGE WORLD SERIES

1 Appearance — 2 Games

2006 • at Oklahoma City, Okla.

6/1	No. 3 Arizona	L	2-3 (9)
6/3	No. 9 Arizona State	L	1-3

It was also Oregon State's first Pac-12 road win of any sort since 2009 (4/11/09 vs. Oregon; W, 2-1) and was the program's first true road win against a top-15 team since it defeated No. 11 Washington, 2-0, on April 27, 2007. The 7-5 final also snapped UCLA's 12-game winning streak, handed the Bruins (25-7, 2-1 Pac-12) their first home loss of the season and only their first home defeat at the hands of an unranked opponent since 2009.

Civil War Records: The victories against No. 15 Oregon in March gave Oregon State its first back-to-back wins against the Ducks since 2008 and sealed only the Beavers' third Pac-12 series victory since that year. The 7-1 final in the finale was the Beavers' largest victory against Oregon in over a decade, since an 11-2 win on April 14, 2001.

Cruising to Victory: The 13-1 final against Cal State Northridge on March 28 was Oregon State's fifth win this year in which the margin of victory was at least 10 runs, tying for second in program history. The last time the Beavers defeated five opponents by double-digits was in 1993. The same 1978 holds the record in that category as well, as they won eight games by 10 or more that season.

Not A Single One: In the second game of its doubleheader against Maine on Feb. 27, Oregon State shutout the Black Bears, 13-0, dispatching its opponent in only five innings. The final score marked the Beavers' largest shutout victory since a 17-run triumph over UAB on March 29, 2006.

Beavers Bring the Bats: OSU opened up its 2012 season by going 3-2 at the Kajikawa Classic and proceeded to put together the single-best five-game offensive stretch in team history. The squad put up a staggering 59 runs in five games (31 innings), crushing 10 home runs, including two grand slams, while getting on base at a .482 clip and going a perfect 8-for-8 on stolen bases.

Big Win: In the final game of the Kajikawa Classic, Oregon State upended No. 20 Nebraska, 11-3, in only six innings. It's the school's first victory over a top-20 team by way of the mercy rule since a 9-0 win over No. 17 Washington on April 3, 2005.

Mercy Please: The first three of Oregon State's wins this season came without having to go the full seven innings. This marked the first time the Beavers had three wins in a row come in such a fashion since March 2008. That month, the team won three straight games by 8-0 scores in five innings against Mississippi Valley State (twice) and Northern Illinois at the Cascade Clash in Corvallis, Ore. OSU has ended five games this season by way of the mercy rule. The team only had four games end before the seventh inning in all of 2011.

OREGON STATE HISTORY VS. NORMAN REGIONAL OPPONENTS

Tulsa

1/17/96	Texas-Arlington Tournament Arlington, Texas	W	13-5
3/4/00	Hillenbrand Invitational Tucson, Ariz.	W	12-0 (5)
3/24/01	New Mexico State Tournament Las Cruces, N.M.	W	6-1
3/25/01	New Mexico State Tourn. Las Cruces, N.M.	W	5-1

Lehigh

[Oregon State and Lehigh have never played one another.]

Oklahoma

4/25/80	Cal Invitational Berkeley, Calif.	L	1-0
3/4/95	Troy Cox Invitational Las Cruces, N.M.	L	9-1
3/20/97	Pony Invitational Fullerton, Calif.	W	4-1
3/23/97	Pony Invitational Fullerton, Calif.	L	4-1
3/19/98	Kia Classic Fullerton, Calif.	W	3-1
3/16/00	Kai Classic Fullerton, Calif.	L	9-0 (6)

Oklahoma (cont.)

5/20/00	NCAA Regionals Norman, Okla.	L	5-3
5/21/00	NCAA Regionals Norman, Okla.	L	3-2
2/23/01	NFCA Leadoff Classic Columbus, Ga.	L	1-0
5/18/03	NCAA Regionals Gainesville, Fla.	L	7-2
2/24/07	Palm Springs Classic Palm Springs, Calif.	L	4-1
2/26/10	Cathedral City Classic Cathedral City, Calif.	L	6-1



2012 Oregon State Softball

At A Glance

Category	Home	Road	Neutral	Overall
Record	7-6	8-9	19-6	34-21
Pac-12 record	5-6	4-8	0-0	9-14
Non-Conference record	2-0	4-1	19-6	25-7
Versus Top 25	5-6	2-7	2-1	9-14
Versus Top 10	3-5	0-0	0-0	3-5
February	0-0	1-1	12-3	13-4
March	2-1	3-2	7-3	12-6
April	5-2	3-4	0-0	8-6
May	0-3	1-2	0-0	1-5
Sunday	2-1	2-1	2-2	6-4
Monday	1-0	0-0	2-0	3-0
Tuesday	3-1	0-0	0-0	3-1
Wednesday	0-0	2-0	0-0	2-0
Thursday	0-0	0-1	5-1	5-2
Friday	1-1	2-3	6-2	9-6
Saturday	0-3	2-4	4-1	6-8
Black uniforms	0-0	4-5	5-0	9-5
Orange uniforms	4-2	2-3	8-1	14-6
White uniforms	3-4	2-1	6-5	11-10
Orange 'Swaggy' Pants	1-2	2-2	3-2	6-6
Day	7-6	6-4	16-5	29-15
Night	0-0	2-5	3-1	5-6
vs. Left (Decision)	0-0	2-2	2-0	4-2
vs. Right (Decision)	7-6	5-7	18-6	30-19
Scoring first	4-2	3-5	16-1	23-8
0-2 runs	1-5	0-4	2-4	3-13
3-5 runs	5-0	4-3	9-0	18-3
6-9 runs	1-1	2-2	2-2	5-5
10+ runs	0-0	2-0	6-0	8-0
Opponent scores first	3-4	3-4	5-5	11-13
0-2 runs	5-0	6-0	11-0	22-0
3-5 runs	2-3	2-1	7-3	11-7
6-9 runs	0-3	0-7	1-2	1-12
10+ runs	0-0	0-1	0-1	0-2
1-run games	4-2	1-1	7-3	12-6
2-run games	2-1	1-2	2-0	5-3
5+ runs	1-2	3-4	8-1	12-7
Leading after 4	4-2	5-2	16-1	26-5
Leading after 5	5-2	7-1	12-0	25-3
Leading after 6	5-0	6-0	12-0	24-0
Trailing after 4	1-4	1-6	2-5	4-15
Trailing after 5	1-4	0-7	1-3	2-14
Trailing after 6	0-3	0-5	0-2	0-10
Tied after 4	1-0	2-1	1-0	4-1
Tied after 5	0-0	0-1	3-3	3-4
Tied after 6	1-1	1-2	3-4	5-7
Extra-inning games	2-1	0-1	1-1	3-3
Shutouts	1-0	1-3	3-0	5-3
Following a win	4-3	5-4	14-3	23-10
Following a loss	3-3	3-5	4-2	10-10
Out-hit opponent	4-2	7-1	14-1	25-4
Opponent out-hit	3-3	0-7	3-4	6-14
Hits are equal	0-1	1-1	2-1	3-3
Make 0 errors	2-2	5-5	7-1	14-8
Make 1 error	3-3	2-2	7-3	12-8
Make 2+ errors	2-1	1-2	5-2	8-5
Opp. makes 0 errors	3-2	2-5	5-2	10-9
Opp. makes 1 error	2-1	4-2	7-1	13-4
Opp. makes 2+ errors	2-3	2-2	7-3	11-8

Home Run Breakdown

No.	Player	Date	Opponent/Pitcher	On	Inn.	Out	Count
1	Kutz, Ally (1)	2/9	BYU/Almond	2	2	0	2-2
2	Hall, Paige (1)	2/9	BYU/Howell	1	2	1	2-1
3	Guzy, Erin (1)	2/9	BYU/Howell	0	2	2	1-1
4	Beltran, Desiree (1)	2/9	BYU/Howell	0	2	2	2-1
5	Hall, Paige (2)	2/9	BYU/Duckworth	3	2	2	3-2
6	Gilmore, Dani (1)	2/10	Georgia Tech/Anderson, L.	0	3	0	0-1
7	Cavestany, Lea (1)	2/10	Georgia Tech/Anderson, L.	0	7	0	0-0
8	Beltran, Desiree (2)	2/10	McNeese State/Bond M.	1	5	2	1-1
9	Cavestany, Lea (2)	2/11	Nebraska/Hagemann	3	2	1	3-1
10	Kutz, Ally (2)	2/11	Nebraska/Hagemann	1	5	1	0-0
11	Gilmore, Dani (2)	2/17	SDSU/Micetich (Leadoff HR)	0	1	0	3-2
12	Beltran, Desiree (3)	2/17	SDSU/Micetich	0	4	0	3-1
13	Guzy, Erin (2)	2/17	SDSU/Micetich	1	9	0	3-1
14	Cavestany, Lea (3)	2/23	New Mexico/Sheehan	0	4	0	3-2
15	Gilmore, Dani (3)	2/26	Colorado State/McCarthy	2	2	2	0-0
16	Beltran, Desiree (4)	2/27	Maine/Sparks	1	1	2	1-0
17	Brenner, MC (1)	2/27	Maine/Sparks	0	2	1	1-0
18	Santana, Elizabeth (1)	2/27	Maine/Sparks	1	3	0	0-1
19	Hall, Paige (3)	2/27	Maine/Spoehr	2	5	0	0-0
20	Gilmore, Dani (4)	3/2	Indiana/Murphy	0	5	1	3-1
21	Gilmore, Dani (5)	3/3	Michigan State/Layne	2	7	0	1-2
22	Hall, Paige (4)	3/3	Cal State Fullerton/Ybarra	1	2	1	2-1
23	Kutz, Ally (3)	3/8	Long Beach State/Hansen	2	7	2	2-2
24	Hall, Paige (5)	3/10	Michigan State/Layne	0	4	0	0-0
25	Guzy, Erin (3)	3/11	Harvard/Brown	1	6	2	2-2
26	Hall, Paige (6)	3/26	Oregon/Moore	0	4	0	0-0
27	Beltran, Desiree (5)	3/26	Oregon/Moore	2	5	0	1-0
28	Santana, Elizabeth (2)	3/30	UCLA/Hall	0	4	0	1-1
29	Santana, Elizabeth (3)	4/10	Arizona State/Escobedo	0	7	1	1-2
30	Santana, Elizabeth (4)	4/10	Arizona State/Escobedo	1	9	0	2-2
31	Beltran, Desiree (6)	4/13	Stanford/Gerhart	1	7	1	0-0
32	Gilmore, Dani (6)	4/21	Washington/Inglesby	2	2	1	0-0
33	Kutz, Ally (4)	4/22	Washington/Walker	1	2	0	0-0
34	Beltran, Desiree (7)	4/27	Utah/Nielson	0	2	1	1-2
35	Santana, Elizabeth (5)	4/27	Utah/Nielson	0	5	2	3-1
36	Gilmore, Dani (7)	4/27	Utah/Amu	1	7	0	3-2
37	Cavestany, Lea (4)	4/27	Utah/Amu	2	7	1	1-2
38	Gilmore, Dani (8)	4/29	Utah/Nielson	1	3	0	0-0
39	Gilmore, Dani (9)	4/29	Utah/Nielson	0	5	0	1-2
40	Cavestany, Lea (5)	5/12	Arizona/Babcock	0	4	1	0-0

Total: 40

Home: 6

Road: 13

Neutral: 21

Solo: 17

2-Run: 13

3-Run: 8

Grand Slam: 2

vs. Left: 3

vs. Right: 37

Pac-12: 15

Non-Conf.: 25

Ahead: 15

Behind: 17

Equal: 8

First Pitch: 11

Hit Streaks Of Five Or More Games

Hannah Bouska

11 games (Feb. 19-March 3):
15-for-35, .429, 8 R, 9 RBI, 4 SB

Hannah Bouska

5 games (April 24-May 4):
7-for-16, .438, 4 R, 2 RBI, 3 2B, SB

Ya Garcia

8 games (Feb. 11-23):
8-for-26, .308, 3 R, 1 RBI, 2 SB

Lea Cavestany

5 games (March 24-March 28):
8-for-14, .571, 4 R, 6 RBI, 3 2B

Dani Gilmore

6 games (March 25-31):
6-for-20, .300, 6 R, 1 2B, 4 BB, 3 SB

Lea Cavestany

5 games (Feb. 27-March 3):
6-for-11, .545, 4 R, 5 RBI, 4 2B

Desiree Beltran

5 games (March 25-March 30):
7-for-17, .412, 4 R, 6 RBI, 1 HR

Dani Gilmore

5 games (Feb. 23-27):
6-for-17, .353, 4 R, 4 RBI, 1 HR

Elizabeth Santana

5 games (Feb. 18-24):
10-for-15, .667, 4 R, 2 RBI, 2 2B



2012 Oregon State Softball

Game-By-Game Offensive Leaders

<i>Opponent</i>	<i>Hits</i>	<i>Runs</i>	<i>RBI</i>	<i>Walks</i>
Brigham Young	Garcia (3)	two tied (3)	Hall (6)	three tied (2)
Idaho State	two tied (3)	two tied (3)	Santana (4)	four tied (2)
Georgia Tech	two tied (3)	Gilmore (3)	three tied (2)	three tied (1)
McNeese State	Beltran (2)	two tied (1)	Beltran (2)	-
Nebraska	three tied (2)	Cavestany (3)	Cavestany (5)	Hall (2)
UC Santa Barbara	three tied (2)	two tied (2)	Santana (2)	two tied (1)
San Diego State	two tied (2)	Beltran (2)	Guzy (3)	Gilmore (1)
Notre Dame	four tied (1)	three tied (1)	Garcia (1)	two tied (1)
San Diego	two tied (2)	Gilmore (2)	three tied (1)	Hall (2)
Central Florida	five tied (1)	two tied (1)	Beltran (1)	three tied (1)
Iowa State	Santana (3)	Santana (2)	Bouska (2)	Gilmore (3)
New Mexico	two tied (2)	two tied (2)	Bouska (3)	two tied (2)
Ohio State	Santana (3)	four tied (1)	Hall (3)	three tied (1)
Iowa	three tied (1)	two tied (1)	Bouska (2)	Kutz (2)
Colorado State	two tied (2)	four tied (1)	Gilmore (3)	Guzy (2)
Maine (Game 1)	six tied (1)	Bouska (2)	two tied (1)	three tied (1)
Maine (Game 2)	three tied (2)	Santana (3)	two tied (3)	Guzy (2)
Indiana	Gilmore (3)	Gilmore (2)	Gilmore (3)	-
Northwestern	Guzy (3)	Bouska (2)	Guzy (3)	four tied (1)
Michigan State	three tied (2)	three tied (2)	two tied (3)	four tied (2)
Cal State Fullerton	three tied (2)	five tied (1)	Hall (2)	Guzy (2)
Florida International	two tied (1)	Cavestany (1)	Bouska (1)	Beltran (2)
North Carolina	two tied (2)	two tied (2)	two tied (2)	Santana (2)
Long Beach State	Hall (3)	two tied (2)	Kutz (4)	Gilmore (4)
Pittsburgh	Santana (2)	three tied (1)	Santana (2)	Gilmore (1)
Michigan State	Santana (2)	five tied (1)	Brenner (2)	four tied (1)
Notre Dame	two tied (1)	Chandler (1)	Hall (1)	-
Harvard	five tied (1)	two tied (1)	Guzy (2)	Chandler (1)
Oregon (Game 1)	Cavestany (2)	two tied (1)	two tied (1)	two tied (1)
Oregon (Game 2)	Santana (3)	five tied (1)	Santana (2)	Gilmore (2)
Oregon (Game 3)	three tied (2)	seven tied (1)	Beltran (3)	Hall (1)
Cal State Northridge (Game 1)	two tied (2)	three tied (2)	three tied (2)	two tied (2)
Cal State Northridge (Game 2)	three tied (2)	Gilmore (2)	Santana (2)	-
UCLA (Game 1)	Santana (2)	four tied (1)	Santana (2)	three tied (1)
UCLA (Game 2)	two tied (1)	-	-	two tied (1)
UCLA (Game 3)	Santana (3)	Garcia (2)	two tied (2)	three tied (1)
Arizona State (Game 1)	two tied (2)	Santana (2)	Santana (3)	two tied (2)
Arizona State (Game 2)	Guzy (3)	two tied (1)	two tied (1)	Santana (1)
Stanford (Game 1)	two tied (2)	four tied (1)	Beltran (2)	two tied (2)
Stanford (Game 2)	Guzy (2)	-	-	two tied (1)
Stanford (Game 3)	four tied (1)	-	-	-
Washington (Game 1)	three tied (1)	four tied (1)	two tied (1)	three tied (1)
Washington (Game 2)	Santana (3)	two tied (2)	Gilmore (3)	five tied (1)
Washington (Game 3)	four tied (1)	three tied (1)	Kutz (2)	four tied (1)
Portland State (Game 1)	three tied (2)	two tied (1)	two tied (1)	Hall (1)
Portland State (Game 2)	two tied (2)	three tied (1)	Hall (2)	two tied (1)
Utah (Game 1)	four tied (4)	four tied (2)	Cavestany (3)	two tied (1)
Utah (Game 2)	three tied (2)	six tied (1)	Bouska (2)	three tied (1)
Utah (Game 3)	Gilmore (3)	Gilmore (2)	Gilmore (3)	Santana (2)
Cal (Game 1)	two tied (1)	Santana (1)	Guzy (1)	Santana (1)
Cal (Game 2)	Cavestany (2)	two tied (1)	Garcia (1)	three tied (1)
Cal (Game 3)	two tied (2)	Gilmore (1)	Santana (1)	Bouska (3)
Arizona (Game 1)	six tied (1)	four tied (1)	four tied (1)	Gilmore (1)
Arizona (Game 2)	two tied (3)	Gilmore (2)	four tied (1)	Cavestany (1)
Arizona (Game 3)	Beltran (2)	Cavestany (1)	Cavestany (1)	Garcia (1)



2012 Oregon State Softball

Record By Player Starts

P	Andreana, Tina (18-11); Demore, Marina (10-6); Feickert, Aryn (6-3); Hall, Paige (0-1)
C	Kutz, Ally (33-21); Gilmore, Dani (1-0)
1B	Guzy, Erin (34-21)
2B	Garcia, Ya (34-21)
3B	Beltran, Desiree (34-19); Chandler, Nikki (0-1) Richardson, Emily (0-1)
SS	Santana, Elizabeth (34-21)
LF	Cavestany, Lea (33-21); Bouska, Hannah (1-0)
CF	Gilmore, Dani (33-21); Bouska, Hannah (1-0)
RF	Bouska, Hannah (28-18); Brenner, Mary Claire (6-3)
DP	Hall, Paige (34-20); Brenner, Mary Claire (0-1)

Record By Batting Order Starts

1	Gilmore, Dani (29-17); Santana, Elizabeth (5-4)
2	Bouska, Hannah (25-14); Gilmore, Dani (5-4); Santana, Elizabeth (4-3)
3	Santana, Elizabeth (25-14); Guzy, Erin (5-3); Beltran, Desiree (4-4)
4	Beltran, Desiree (19-7); Hall, Paige (13-9); Guzy, Erin (2-5)
5	Guzy, Erin (15-4); Hall, Paige (9-5); Cavestany, Lea (5-6) Brenner, Mary Claire (3-3); Beltran, Desiree (2-3)
6	Guzy, Erin (11-8); Kutz, Ally (5-5); Caestany, Lea (6-3); Beltran, Desiree (6-3); Hall, Paige; (4-1); Brenner, Mary Claire (2-1)
7	Kutz, Ally (16-7); Hall, Paige (8-6); Cavestany, Lea (6-5); Beltran, Desiree (3-2); Guzy, Erin (1-1)
8	Cavestany, Lea (16-7); Kutz, Ally (12-9); Garcia, Ya (5-4); Brenner, Mary Claire (1-0); Chandler, Nikki (0-1)
9	Garcia, Ya (29-17); Bouska, Hannah (5-4)

Batter Breakdown

Player	Multiple-Hit Games					Multiple-RBI Games					Home Runs					
	2	3	4	5+	Tot.	2	3	4	5+	Tot.	Solo	2-Run	3-Run	GS	Tot.	Last
I. Batayola	-	-	-	-	-	-	-	-	-	-	-	-	-	-	-	-
D. Beltran	13	-	-	-	13	6	1	-	-	7	3	3	1	-	7	4/27 vs Utah
H. Bouska	7	2	-	-	9	5	2	-	-	7	-	-	-	-	-	-
M. Brenner	1	-	-	-	1	2	-	-	-	2	1	-	-	-	1	2/27 vs Maine
M. Bundy	-	-	-	-	-	-	-	-	-	-	-	-	-	-	-	-
L. Cavestany	10	-	-	-	10	2	3	-	1	6	3	-	1	1	5	5/12 vs Arizona
N. Chandler	-	-	-	-	-	-	-	-	-	-	-	-	-	-	-	-
M. Doremus	-	-	-	-	-	-	-	-	-	-	-	-	-	-	-	-
Y. Garcia	3	1	-	-	4	-	1	-	-	1	-	-	-	-	-	-
D. Gilmore	9	5	-	-	14	4	6	-	-	10	4	2	3	-	9	4/29 vs Utah
E. Guzy	8	3	-	-	11	4	2	-	-	6	1	2	-	-	3	3/11 vs Harvard
P. Hall	9	1	-	-	10	5	2	-	1	8	2	2	1	1	6	3/26 vs Oregon
A. Kutz	3	-	-	-	3	7	1	1	-	9	-	2	2	-	4	4/22 vs Washington
B. Niehus	-	-	-	-	-	-	-	-	-	-	-	-	-	-	-	-
E. Richardson	-	-	-	-	-	-	-	-	-	-	-	-	-	-	-	-
E. Santana	15	5	-	-	20	6	2	1	-	9	3	2	-	-	5	4/27 vs Utah
Totals	78	17	0	0	95	41	20	2	2	65	17	13	8	2	40	

Inning-By-Inning

	1	2	3	4	5	6	7	8	9	EX	Total
Oregon State	28	61	36	42	54	19	36	3	4	7	283
Opponents	32	32	27	37	34	27	20	2	4	6	215

2012 Pac-12 Indiv. Stats (Conf. Games Only - 5/13)

Hits	ERA
T10. Liz Santana25	9. Paige Hall.....4.16
Hit By Pitch	Opposing Batting Average
2. Desiree Beltran6	7. Marina Demore251
7. Dani Gimore4	
Sac Bunts	Wins
T1. Hannah Bouska.....5	10. Paige Hall4
T3. Ya Garcia4	
T5. Desiree Beltran.....3	Saves
	T1. Paige Hall.....2
Stolen Bases	T5. Tina Andreana.....1
T8. Dani Gilmore.....6	Caught Stealing By
	T1. Ally Kutz.....4

2012 Pac-12 Team Stats (Conf. Games Only - 5/13)

Batting Average	Total Bases
8. Oregon State241	8. Oregon State211
Slugging Percentage	Walks
8. Oregon State355	T7. Oregon State64
On Base Percentage	Sac Bunts
7. Oregon State333	1. Oregon State14
Runs Scored	Stolen Bases
7. Oregon State82	4. Oregon State22
Hits	ERA
8. Oregon State143	7. Oregon State4.97
RBI	Opposing Batting Average
7. Oregon State73	6. Oregon State280
Doubles	Saves
7. Oregon State21	T1. Oregon State3
Home Runs	Fielding Double Plays
8. Oregon State15	T3. Oregon State10



2012 Oregon State Softball

2012 Oregon State Softball

RADIO/TV ROSTER



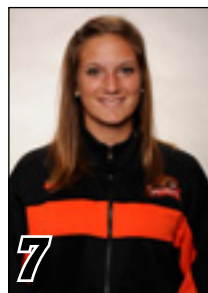
Tina Andreana
Jr. • RHP
R/R • 5'7"
Oakville, Ontario



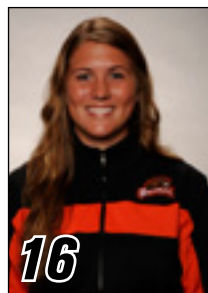
Isabelle Batayola
So. • C/UT
L/R • 5'7"
Seattle, Wash.



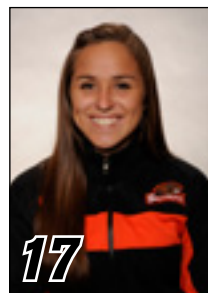
Desiree Beltran
Jr. • 3B
R/R • 5'8"
Agoura Hills, Calif.



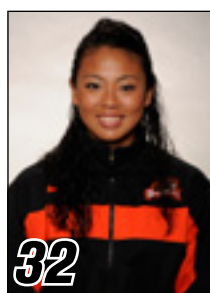
Hannah Bouska
So. • OF
L/R • 5'7"
Keizer, Ore.



Mary Claire Brenner
Sr. • OF
R/R • 5'11"
Portland, Ore.



Madison Bundy
Fr. • UT
R/R • 5'5"
Anacortes, Wash.



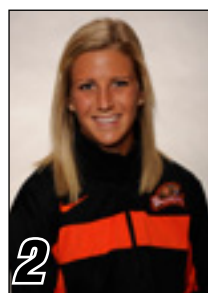
Lea Cavestany
Jr. • OF
L/R • 5'5"
Pittsburg, Calif.



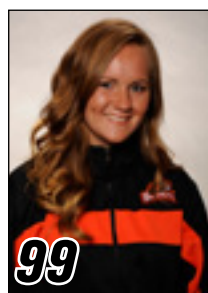
Nikki Chandler
Sr. • IF
R/R • 5'8"
Houston, Texas



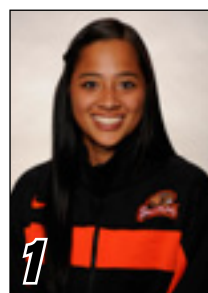
Marina Demore
Jr. • RHP
R/R • 5'6"
Vancouver, British Columbia



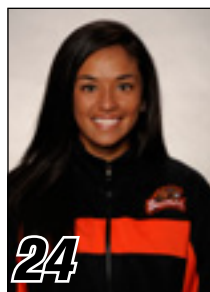
Maggie Doremus
Jr. • OF/UT
L/R • 5'9"
San Diego, Calif.



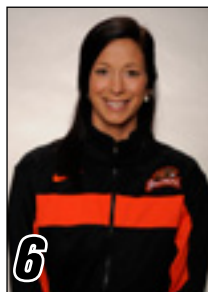
Aryn Feickert
Fr. • RHP
R/R • 5'7"
Lancaster, Calif.



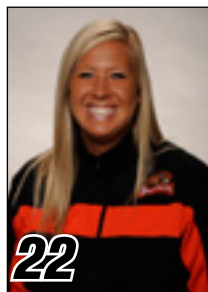
Ya Garcia
Fr. • 2B
L/R • 5'3"
Fairfield, Calif.



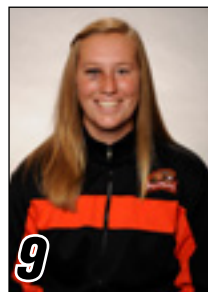
Dani Gilmore
Fr. • CF/C
L/L • 5'8"
West Hills, Calif.



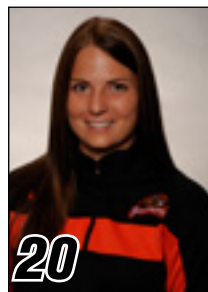
Erin Guzy
Sr. • 1B
L/L • 5'9"
Beaverton, Ore.



Paige Hall
Sr. • DP/P
R/R • 5'11"
Portland, Ore.



Ally Kutz
Jr. • C
R/R • 5'10"
Mt. Vernon, Wash.



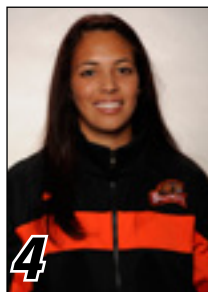
Bailee Niehus
So. • 1B/OF
L/L • 5'11"
McMinnville, Ore.



Emily Richardson
Sr. • IF
R/R • 5'5"
Sacramento, Calif.



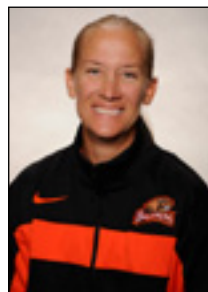
Ashley Sanchez
Sr. • OF
L/L • 5'1"
Alameda, Calif.



Elizabeth Santana
Jr. • SS
R/R • 5'3"
Fontana, Calif.



Kirk Walker
Head Coach
18th Year



Laura Berg
Assistant Coach
1st Year



Geoff Hirai
Assistant Coach
1st Year



Player Notes

#55 | RHP TINA ANDREANA Jr. • R/R • Oakville, Ontario**Last Appearance:** L, 3.0 IP, 7 H, 5 R, 5 ER, 2K, 2 BB (5/10 vs Arizona)**Season-High Inn:** 9.0 IP, San Diego State (2/17)**Career:** 9.0, SDSU (2/17/12)**Season-High K:** 11, San Diego State (2/17)**Career:** 11, SDSU (2/17/12)

2012: Pitched the first three innings of a 12-4 loss to Arizona on 5/10 ... Started two of three games at Utah, winning once after pitching 4.1 innings on 4/29 ... Pitched the second complete-game shutout of her career in a 2-0 win against Portland State on 4/22, allowing only two hits and striking out nine ... Recorded both of OSU's wins in a series victory over No. 9 Washington ... Tossed her fifth complete game of the season, giving up only one earned, in a 3-2 victory over UW on 4/22 ... Threw six innings and gave up three earned in a 4-3 win over the Huskies on 4/20 ... Started and pitched 5.0 innings of shutout ball in the Beavers' upset of No. 3 Arizona State on 4/10 (4-2) ... Came on and pitched 2/3 of an inning to earn her second career save against No. 14 UCLA on 4/1 (W, 7-5) ... Threw 3.0 innings without allowing a run in a start against No. 15 Oregon on 3/26 ... Lasted all 7.0 innings, allowing only one run in an 8-1 victory over then-No. 23 North Carolina on 3/8 ... Did not allow an earned run at the DeMarini Invitational, going 12.1 innings with 13 strikeouts ... Allowed only two hits in five innings to get her fourth win of the year against Cal State Fullerton (3/3) ... Earned her first career save by throwing the last two innings of an 11-6 win over Michigan State on 3/3 ... Pitched 5.1 innings to earn the win against Northwestern on 3/2 (5-3) ... Tallied her second win of the year by pitching a complete game against Ohio State on 2/24, allowing two earned runs in seven innings ... Set career highs for innings pitched (9.0) and strikeouts (11) against San Diego State on Feb. 17 ... Tossed six innings, giving up only four hits and striking out five to earn the win against No. 20 Nebraska on 2/11, her third-ever victory against a ranked opponent ... Surrendered one earned run in 2.1 innings of work in a 16-3 win over Idaho State on 2/9.

Career Pitching

Year	ERA	W-L	App	GS	CG	SHO	CBO	SV	IP	H	R	ER	BB	SO
2011	3.39	6-16	28	20	7	1	1	0	122.0	118	78	59	84	106
2012	4.35	9-11	34	29	6	1	1	2	111.0	115	85	69	76	74
TOTAL	3.85	15-27	62	49	13	2	2	2	233.0	233	163	128	160	180

#14 | C/UTIL ISABELLE BATAYOLA So. • L/R • Seattle, Wash.**Last Game:** 0-for-0, (5/11 vs Arizona)**Streak:****Season-High Hits:** 1, CSUN (3/28)**Career:** 1, CSUN (3/28/12)**Season-High Runs:** 2, CSUN (3/28)**Career:** 2, two times**Season-High RBI:****Career:**

2012: Stole her first two bases of the season in the Beavers' series against No. 1 Cal from May 4-6 ... Pinch ran and scored her 10th run of the season, and 20th of her career, against Utah on 4/28 ... Made pinch-running appearances in two games against No. 9 Washington, scoring once in the Beavers' 4-3 win on 4/20 ... Entered each game of the series against UCLA as a pinch runner ... Notched her first-career hit and scored two runs in a 13-1 victory over Cal State Northridge on 3/28 ... Scored a run in a 12-2 victory over LBSU on 3/8 ... Notched her first at-bat of the season in game two of a doubleheader against Maine on 2/27 (W, 13-0) ... Pinch ran in the ninth inning against San Diego State and scored on Erin Guzy's two-run home run (2/17) ... Came in as a pinch runner against Idaho State and scored her first run of the season on 2/9 (W, 16-3).

Career Hitting

Year	Avg	GP-GS	AB	R	H	2B	3B	HR	RBI	BB	SO	SB-ATT
2011	.000	38-1	1	10	0	0	0	0	0	0	0	3-4
2012	.333	23-0	3	11	1	0	0	0	0	0	0	2-2
TOTAL	.250	61-1	4	21	1	0	0	0	0	0	0	5-6

#13 | 3B DESIREE BELTRAN Jr. • R/R • Agoura Hills, Calif.**Last Game:** 2-for-2, (5/12 vs Arizona)**Streak:** 2g, 3-for-4, 2B, RBI**Season-High Hits:** 2, 13 times**Career:** 3, W. Mich. (2/11/11)**Season-High Runs:** 3, BYU (2/9)**Career:** 3, BYU (2/9/12)**Season-High RBI:** 3, Oregon (3/26)**Career:** 4, W. Mich. (2/11/11)

2012: Went 3-for-6 with a double, run and RBI in the Beavers' series at No. 16 Arizona from 5/10-12 ... Hit her seventh home run of the season as part of a 2-for-3 effort in a 10-2 victory over Utah on 4/27 ... Set the school record for single-season HBP when in the same game when she was plunked for the 15th time ... Went 1-for-2 in game two of a doubleheader sweep against Portland State on 4/24 ... Had a RBI in two of three games against No. 9 Washington from 4/20-22 ... Smacked her sixth home run of the season as part of a 2-for-4 effort against Stanford on 4/13 ... Drove in a run in the Beavers' upset of No. 3 Arizona State on 4/10 ... Went 2-for-4 with a home run and three RBI in a 7-1 trouncing of No. 15 Oregon on 3/26 ... Had her second three-game hitting streak of the season in the first three games of the LBSU Invitational (3/8-9) ... from Was 2-for-4 with a double and RBI in a win over Cal State Fullerton on 3/3 ... Went 1-for-2 with 2 RBI against Michigan State (W, 11-6) ... Smacked her fourth home run of the year as part of a 2-for-2 effort against Maine on 2/27 (W, 13-0) ... Was 2-for-4 with a double and an RBI in a 5-4 win over Iowa State on 2/23 ... Launched her third home run of the season as part of a 2-for-3 effort against San Diego State on 2/17 ... Was 2-for-4 with a double and an RBI in an 11-3 victory against No. 20 Nebraska on 2/11 ... Hit a game-tying two-run home run in the fifth inning as part of a 2-for-3 effort against McNeese State on 2/10 ... Drove in two runs against Idaho State on 2/9 (W, 16-3) ... Set a career-high with three runs scored in a 22-5 win over BYU on 2/9 ... Went 2-for-3 against the Cougars, including hitting the second of back-to-back home runs with Erin Guzy in the Beavers' 16-run second inning.

Career Hitting

Year	Avg	GP-GS	AB	R	H	2B	3B	HR	RBI	BB	SO	SB-ATT
2011	.248	47-46	113	8	28	2	0	1	14	18	13	0-0
2012	.293	54-53	140	23	41	6	0	7	30	9	13	0-0
TOTAL	.273	101-99	253	31	69	8	0	8	44	27	26	0-0

#7 | OF HANNAH BOUSKA So. • L/R • Keizer, Ore.**Last Game:** 0-for-2, SAC (5/12 vs Arizona)**Streak:****Season-High Hits:** 3, two times**Career:** 3, two times**Season-High Runs:** 3, Idaho State (2/9)**Career:** 3, Idaho State (2/9/12)**Season-High RBI:** 3, two times**Career:** 3, two times

2012: Notched her second hitting streak of five or more games this season when she reached in five straight from 4/24-5/4 (7-for-16) ... In a series victory over Utah, batted .333 with three runs, two RBI and two doubles ... Went 2-for-2 with a run scored in game two of a doubleheader sweep against Portland State on 4/24 ... Smacked a hit in two games and scored a run in each game of the Beavers' series victory over No. 9 Washington from 4/20-22 ... Notched one of the Beavers' four hits in a loss at Stanford on 4/15 ... Had a hit, run and RBI in a 13-1 win over Cal State Northridge on 3/28 ... Went 1-for-2 with a run scored in a 3-2 win over Pittsburgh on 3/9 ... Had a career and team-high 11-game hitting streak from Feb. 19-March 3, going 15-for-35 (.429) with 8 R, 9 RBI and 4 SB ... Knocked in the game winner in extra innings against Iowa on 2/24 ... Scored two runs as part of a 2-for-4 effort against UCSB on 2/17 ... Was 1-for-3 with two runs scored in Oregon State's upset of No. 20 Nebraska on 2/11 ... Went a combined 6-for-8 with five RBI and four runs scored in back-to-back games against Georgia Tech and McNeese State (2/10) ... Had one hit in three at-bats in the season-opener against BYU (W, 22-5) ... Set career highs in runs (3) and RBI (3) against Idaho State on 2/9 (W, 16-3) ... Stole a base in each of the team's first three games of the season.

Career Hitting

Year	Avg	GP-GS	AB	R	H	2B	3B	HR	RBI	BB	SO	SB-ATT
2011	.125	22-12	32	4	4	1	0	0	1	2	9	0-2
2012	.277	54-48	155	32	43	4	1	0	21	16	32	11-12
TOTAL	.251	76-60	187	36	47	5	1	0	22	18	41	11-14



Player Notes

#16 | OF MARY CLAIRE BRENNER Sr. • R/R • Portland, Ore.

Last Game: 0-for-0, (5/10 vs Arizona)

Streak:

Season-High Hits: 2, Arizona State (4/10)

Career: 3, two times

Season-High Runs: 1, three times

Career: 3, So. Utah (2/14/10)

Season-High RBI: 2, two times

Career: 6, two times

2012: Drove in a run with a pinch-hit single against Utah on 4/28 ... Made pinch-hitting appearances in each game of the series against No. 9 Washington, driving in a run in a 4-3 victory on 4/20 ... Had her first multi-hit game of the season in a 4-2 upset of No. 3 Arizona State on 4/10 ... Went 2-for-5 with a double, her first of the season, and two RBI in OSU's series at No. 14 UCLA, starting two of the three games ... Made her second start of the season and went 1-for-1 with a run in a 13-1 win over Cal State Northridge on 3/28 ... Drove in a run as a pinch hitter in OSU's 7-1 victory against No. 15 Oregon on 3/26 ... Went 3-for-5 in games at the LBSU Invitational and against Harvard (3/8-11) ... Drove in two runs with a pinch-hit single in the bottom of the sixth inning to spark OSU to a 5-2 win over Michigan State on 3/10 ... Made her first start of the season on 2/27 against Maine and hit her 10th career home run in her first at-bat, a solo shot to left field ... Made pinch-hitting appearances in games against BYU (2/9), Idaho State (2/9) and Georgia Tech (2/10), UCSB (2/17) and San Diego (2/18).

Career Hitting

Year	Avg	GP-GS	AB	R	H	2B	3B	HR	RBI	BB	SO	SB-ATT
2009	.192	21-8	26	2	5	1	0	0	2	4	10	0-0
2010	.278	48-44	126	16	35	7	1	7	28	18	36	1-1
2011	.244	36-31	82	6	20	3	0	2	20	10	14	0-0
2012	.239	35-10	46	3	11	1	0	1	8	4	12	0-0
TOTAL	.254	140-93	280	27	71	12	1	10	58	36	72	1-1

#17 | UTIL MADISON BUNDY Fr. • R/R • Anacortes, Wash.

Last Game: 0-for-0, SB (5/11 vs Arizona)

Streak:

Season-High Hits:

Career:

Season-High Runs: 1, 21 times

Career: 1, 21 times

Season-High RBI:

Career:

2012: Stole her fifth base of the season against No. 16 Arizona on 5/11 ... Had her second at bat of the season on 5/6 against No. 1 Cal ... Scored two runs in a series victory against Utah (4/27-29) ... Came on as a pinch runner in each game of a three-game series against No. 9 Washington, scoring once in a 4-3 win over the Huskies on 4/20 ... Had her first career at-bat against Stanford on 4/14 ... Notched her first Pac-12 steal on 3/30 against No. 14 UCLA ... Stole the second base of her career in a 4-1 loss to FIU on 3/4 ... Made her first defensive appearance for Oregon State in the fifth inning of a 13-0 win against Maine (2/27) ... Scored the game-winning run against Central Florida (2/19) ... Made an appearance as a pinch runner in all but one Oregon State's first 10 games ... Scored her first career run in a 22-5 win over BYU on 2/9 ... Has scored a run in more than half of the team's games this season.

Career Hitting

Year	Avg	GP-GS	AB	R	H	2B	3B	HR	RBI	BB	SO	SB-ATT
2012	.000	38-0	2	21	0	0	0	0	0	0	1	5-6
TOTAL	.000	38-0	2	21	0	0	0	0	0	0	1	5-6

#32 | OF LEA CAVESTANY Jr. • L/R • Pittsburg, Calif.

Last Game: 1-for-3, HR, R, RBI, BB, SB (5/12 vs Arizona)

Streak: 1g, 1-for-3, HR, R, RBI, BB, SB

Season-High Hits: 2, nine times

Career: 3, four times

Season-High Runs: 3, Nebraska (2/11)

Career: 3, three times

Season-High RBI: 5, Nebraska (2/11)

Career: 6, Stanford (4/11/10)

2012: Hit her fifth home run of the season against No. 16 Arizona on 5/12 (L, 3-1) ... Had two of the Beavers' five hits against No. 1 Cal on 5/5 ... Crushed a three-run home run, her fourth of the season, as part of a 10-2 OSU victory over Utah on 4/27 ... Went 1-for-2 in game two of a doubleheader sweep against Portland State on 4/24 ... Had a hit in each game against No. 3 Arizona State and drove in a run in game two of the series ... Was 1-for-3 with a run and RBI in a 7-5 upset of No. 14 UCLA on 4/1 ... Had three hits in five at bats in a doubleheader sweep at Cal State Northridge on 3/28 ... Went 5-for-9 in the Civil War Series with four RBI ... Was 2-for-3 with two RBI in OSU's 7-1 win over No. 15 Oregon on 3/26 ... Went 2-for-2 for her team's only hits in a 8-2 loss to No. 15 Oregon on 3/24 ... Had her sixth two-hit game of the season against Cal State Fullerton (3/3) ... Was 1-for-3 with a bases clearing double with the bags full in an 11-6 win against Michigan State on 3/3 ... Hit her third home run of the season as part of a 2-for-4 effort against New Mexico on 2/23 (L, 10-6) ... Drove in the game-winner in the seventh inning against Iowa State with a line drive into the left-center field gap on 2/23 ... Recorded the 100th hit of her career against UCSB on 2/17 (2-for-3, RBI) ... Keyed Oregon State's upset of No. 20 Nebraska with a 2-for-3 effort and five RBI, including her first career grand slam, in the final game of the Kajikawa Classic (2/11) ... Hit her first home run of the season, a solo shot, in a 9-8 loss to No. 23 Georgia Tech on 2/10 ... Tied a career high with three runs in a 16-3 victory over Idaho State (2/9) ... Started the season with five hits in her first 12 at-bats in the squad's first three games.

Career Hitting

Year	Avg	GP-GS	AB	R	H	2B	3B	HR	RBI	BB	SO	SB-ATT
2010	.350	53-53	160	36	56	11	2	7	34	19	25	13-13
2011	.240	47-47	150	17	36	12	0	2	12	15	27	4-5
2012	.255	55-54	153	29	39	7	0	5	30	19	29	7-9
TOTAL	.283	155-154	463	82	131	30	2	14	76	53	81	24-27

#44 | INF NIKKI CHANDLER Sr. • R/R • Houston, Texas

Last Game: 0-for-1, K (5/12 vs Arizona)

Streak:

Season-High Hits:

Career: 2, five times

Season-High Runs: 1, six times

Career: 2, three times

Season-High RBI: 1, two times

Career: 2, three times

2012: Came on as a defensive replacement in both of OSU's wins over No. 9 Washington, scoring a run on 4/20 ... Scored once in the Beavers' 7-5 upset of No. 14 UCLA on 4/1 ... Scored one run and drove in another at the Long Beach State Invitational ... Drove in her first run of the season with a bases loaded walk against Maine on 2/27 (W, 13-0) ... Had her first at-bat of the season against San Diego on 2/18, scoring a run and stealing her first base of the season ... Scored one of Oregon State's 16 runs in a victory over Idaho State (2/9).

Career Hitting

Year	Avg	GP-GS	AB	R	H	2B	3B	HR	RBI	BB	SO	SB-ATT
2009	.136	55-55	88	10	12	1	1	1	5	18	45	1-1
2010	.136	55-54	44	12	6	0	0	1	2	7	16	2-2
2011	.239	45-45	88	8	21	1	0	0	9	4	24	0-0
2012	.000	29-1	12	6	0	0	0	0	2	3	5	2-2
TOTAL	.168	184-155	232	36	39	2	1	2	18	32	90	5-5



2012 Oregon State Softball

Player Notes

#8 | RHP MARINA DEMORE Jr. • R/R • Vancouver, British Columbia

Last Appearance: L, 6.1 IP, 7 H, 3 R, 3 ER, 2 BB, 6 K (5/12 vs Arizona)

Season-High Inn: 8.0, McNeese State (2/10) **Career:** 9.0, So. Miss (3/5/11)

Season-High K: 9, McNeese State (2/9) **Career:** 13, Wash. (5/2/10)

2012: Pitched the third complete-game shutout of her career against No. 16 Arizona on 5/11 in a 4-0 OSU win, allowing only four hits and striking out five ... Had a 12.1 scoreless-innings streak against No. 16 Arizona ... Appeared in two games of the series against No. 1 Cal, holding the Bears to a .179 average in 11 innings ... Started against Utah on 4/28, pitching 3.2 innings of three-hit ball in an 8-6 Oregon State loss ... Came on in relief and pitched the final 3.2 innings of a 7-6, nine-inning loss to No. 9 Washington on 4/21, only giving up three hits and one earned run ... Threw 3.0 innings in the Beavers' series at Stanford from 4/13-15 ... Struck out the 200th batter of her career in a start against No. 14 UCLA on 3/30 ... Pitched 5.2 innings against No. 15 Oregon on 3/25 in a game the Beavers won in extra innings, but did not receive a decision ... Saved her second game of the season in a 3-2 win over Pittsburgh (3/9) ... Earned her seventh win of the season in 5.0 innings of work against Long Beach State on 3/8 (W, 12-2) ... Had her 23-inning scoreless streak snapped in the seventh inning of a 4-3 win over Indiana (3/2) ... Tossed her third complete game of the season in a 4-0 win over Maine on 2/27 ... Notched her first career save in a 4-2 win against Colorado State on 2/26 ... Threw five innings of scoreless relief to earn the win against Iowa (2/24) ... Gave up only two hits in 4.1 innings of work against Central Florida on 2/19 (ND) ... Threw a complete game to earn the win against Notre Dame (2/18) ... Pitched five innings without giving up a run against UCSB on 2/17 (W, 6-0) ... Struck out nine in 8.0 innings of work against McNeese State, allowing only two earned runs on three hits (2/10) ... Threw one inning of relief in games against Georgia Tech (2/10) and Idaho State (2/9) ... Earned the win in the season opener against BYU, going three innings and striking out four in a 22-5 victory.

Career Pitching

Year	ERA	W-L	App	GS	CG	SHO	CBO	SV	IP	H	R	ER	BB	SO
2010	6.03	2-4	16	6	2	0	0	0	36.0	44	37	31	29	35
2011	3.42	7-6	22	14	4	2	2	0	86.0	63	45	42	56	91
2012	2.97	8-6	30	16	4	2	2	2	117.2	99	58	50	54	102
TOTAL	3.59	17-16	68	36	10	4	4	2	239.2	206	140	123	139	228

#2 | OF/UTIL MAGGIE DOREMUS Jr. • L/R • San Diego, Calif.

Last Game: 0-for-1 (5/12 vs Arizona)

Streak:

Season-High Hits: 1, three times **Career:** 2, nine times
Season-High Runs: 2, BYU (2/9) **Career:** 3, Stanford (4/11/10)
Season-High RBI: 1, BYU (2/9) **Career:** 3, Utah State (3/19/11)

2012: Made an appearance in left field in each of the Beavers' three games in Utah (4/27-29) ... Came on as a pinch runner and defensive replacement in all three of Oregon State's games against No. 9 Washington from 4/20-22 ... Appeared in all three games against No. 14 UCLA from 3/30-4/1 ... Notched her third hit of the season and scored her ninth run of the year as part of a 1-for-2 effort in the first game of a doubleheader against Cal State Northridge on 3/28 ... Played in left field in each of the Beavers' five games at the Long Beach State Invitational ... Came on as a pinch runner/defensive replacement in four of five games at the DeMarini Invitational ... Scored the game's first run against Central Florida on 2/19 ... Stole her first base of the season against San Diego State (2/17) ... Was 1-for-1 with one RBI and two runs in the season-opening 22-5 win against BYU.

Career Hitting

Year	Avg	GP-GS	AB	R	H	2B	3B	HR	RBI	BB	SO	SB-ATT
2010	.208	52-51	106	15	22	7	0	1	12	6	22	3-4
2011	.228	44-42	92	9	21	1	0	0	5	10	7	2-3
2012	.300	47-0	10	9	3	0	0	0	1	0	3	2-3
TOTAL	.221	143-93	208	33	46	8	0	1	18	16	32	7-10

#99 | RHP ARYN FEICKERT Fr. • R/R • Lancaster, Calif.

Last Appearance: ND, 1.2 IP, 5 H, 4 R, 4 ER, 3 BB, 1 K (5/10 vs Arizona)

Season-High Inn: 6.1, UCLA (4/1)

Career: 6.1, UCLA (4/1/12)

Season-High K: 4, two times

Career: 4, two times

2012: Made her ninth and final start of the regular season against Portland State on 4/24, giving up two earned in 3.2 innings ... Started and threw 2.1 innings against No. 9 Washington on 4/21 ... Pitched 9.0 of Oregon State's 19.0 innings in the series against No. 15 Stanford from 4/13-15 ... Started and threw 5.0 innings, only giving up one run against No. 3 Arizona State on 4/10 ... Lasted a career-high 6.1 innings in her first-ever Pac-12 start, a 7-5 win over No. 14 UCLA on 4/1 ... Pitched 2.2 innings of scoreless relief against the Bruins on 3/30 ... Earned the second win of her career pitching 3.0 innings of relief in a 13-1, five-inning victory over Cal State Northridge on 3/28 ... Pitched 4.0 innings of one-hit relief against Notre Dame (3/10) ... Earned her first career victory with a complete-game shutout against Maine on 2/27 ... Threw two innings of relief against San Diego (2/18) ... Made her collegiate debut against UCSB on 2/17, allowing one hit in two innings and striking out one.

Career Pitching

Year	ERA	W-L	App	GS	CG	SHO	CBO	SV	IP	H	R	ER	BB	SO
2012	3.57	3-1	17	9	1	1	1	0	51.0	52	28	26	22	22
TOTAL	3.57	3-1	17	9	1	1	1	0	51.0	52	28	26	22	22

#1 | 2B YA GARCIA Fr. • L/R • Fairfield, Calif.

Last Game: 0-for-2, BB, SB (5/12 vs Arizona)

Streak:

Season-High Hits: 3, BYU (2/9) **Career:** 3, BYU (2/9/12)
Season-High Runs: 3, BYU (2/9) **Career:** 3, BYU (2/9/12)
Season-High RBI: 3, BYU (2/9) **Career:** 3, BYU (2/9/12)

2012: Scored her 20th run of the season in a 4-0 victory over No. 16 Arizona on 5/11 ... Drove in a run with a hit on 5/5 against No. 1 Cal ... Had her first multi-hit game in a Pac-12 contest when she went 2-for-2 with a run scored at Utah on 4/28 ... Went a combined 3-for-5 with an RBI in a doubleheader sweep of Portland State on 4/24 ... Drove in her first career Pac-12 run on 4/13 against Stanford ... Went 1-for-2 with two runs scored in OSU's 7-5 upset of No. 14 UCLA on 4/1 ... Notched her first career Pac-12 hit against UCLA on 3/31 ... Drove in her fifth run of the year with an RBI single in a 13-1 win against Cal State Northridge on 3/28 ... Scored three runs at the Long Beach State Invitational ... Had her second multi-hit game of the year in a 2-for-3 outing against Michigan State (W, 11-6) ... Scored the game-winner in extra innings against Iowa on 2/24 ... Had a season-high eight-game hitting streak snapped against Ohio State on 2/24 ... Drove in the winning run with a seventh-inning single against Notre Dame (2/18) ... Was 1-for-3, including her first career stolen base, in the Beavers' 11-3 upset of No. 20 Nebraska on 2/11 ... In her collegiate debut, went a perfect 3-for-3 at the dish, driving in three runs and scoring three, all career highs.

Career Hitting

Year	Avg	GP-GS	AB	R	H	2B	3B	HR	RBI	BB	SO	SB-ATT
2012	.237	55-55	118	20	28	0	0	0	8	16	35	6-8
TOTAL	.237	55-55	118	20	28	0	0	0	8	16	35	6-8



Player Notes

#24 | CF/C DANI GILMORE *Fr. • L/L • West Hills, Calif.***Last Game:** 1-for-3, (5/12 vs Arizona)**Streak:** 4g, 7-for-12, 4 R, RBI, 2 2B, 3B, BB, SB, HBP**Season-High Hits:** 3, five times**Career:** 3, five times**Season-High Runs:** 3, two times**Career:** 3, two times**Season-High RBI:** 3, six times**Career:** 3, six times

2012: Batted .625 in a series at No. 16 Arizona from 5/10-12, with five hits and three runs scored ... Had her fifth three-hit game of the season in a 4-0 win over No. 16 Arizona on 5/11, including her second-career triple ... Launched her team-leading ninth home run of the season against Utah on 4/29, the highest total for an Oregon State freshman since All-American Tarrah Beyster hit 12 in 1997 ... Registered the best Pac-12 series of her career against Utah from 4/27-29, going 5-for-11 with three home runs and six RBI, including a two-homer effort in a 5-4 win on 4/29 ... In the Utah series moved into the single-season top 10 in OSU history in both runs and stolen bases ... Went 2-for-3 in game one of a doubleheader sweep against Portland State on 4/24 ... Went 2-for-3 with a home run, three RBI and two runs against No. 9 Washington on 4/21, her 10th multi-hit game of the season ... Recorded her first career multi-hit game in Pac-12 play when she went 2-for-3 with an RBI at No. 15 Stanford on 4/14 ... Had a six-game hitting streak from 3/25-3/31, her second such streak of five or more games ... Scored two runs in a 5-1 win over Cal State Northridge on 3/28, her eighth multi-run effort of the season ... Tallied her first career Pac-12 hit in a 5-4 extra-innings win against No. 14 Oregon on 3/25 ... Drew a career-high four walks against Long Beach State (3/8) ... Was 2-for-3 with two RBI in a win over then-No. 23 North Carolina on 3/8 ... Went 2-for-3 with a home run, three RBI and two runs in an 11-6 win against Michigan State (3/3) ... Was a perfect 3-for-3 with a home run, three RBI and two SB in a 4-3 win over Indiana (3/2) ... Has reached base safely in 13 consecutive games ... Tallied her second-career three-RBI game with a three-run home run to seal a 4-2 victory over Colorado State on 2/26 ... Drew a career-high three walks against Iowa State on 2/23 ... Had a season-high five consecutive games with a hit from Feb. 23-27 ... Notched her fourth multi-hit game of the season against San Diego on 2/18 (2-for-4, 2 R) ... Smacked her first leadoff home run on 2/17 against San Diego State, only Oregon State's fourth in the last six seasons ... Lasered her first-career double off the right field fence and went 2-for-4 with a run scored against No. 20 Nebraska on 2/11 (W, 11-3) ... Was a perfect 6-for-6 from the plate with five RBI, six runs and two stolen bases in back-to-back games against Idaho State and No. 23 Georgia Tech (2/10) ... Smacked her first-career home run, a solo blast, in the third inning against Georgia Tech ... Drove in two runs and scored another in her collegiate debut against BYU on 2/9 (W, 22-5).

Career Hitting

Year	Avg	GP-GS	AB	R	H	2B	3B	HR	RBI	BB	SO	SB-ATT
2012	.313	55-55	166	42	52	6	2	9	33	34	29	13-14
TOTAL	.313	55-55	166	42	52	6	2	9	33	34	29	13-14

#6 | 1B ERIN GUZY *Sr. • L/L • Beaverton, Ore.***Last Game:** 0-for-3, (5/12 vs Arizona)**Streak:****Season-High Hits:** 3, three times**Career:** 3, seven times**Season-High Runs:** 2, three times**Career:** 2, 10 times**Season-High RBI:** 3, two times**Career:** 3, three times

2012: Notched her seventh career three-hit game against No. 16 Arizona on 5/11, a 4-0 Oregon State win ... Had her first back-to-back multi-hit games of the season against Utah on 4/28 and 4/29 ... Hit the 30th double of her career, tied for 10th all-time at Oregon State, as part of a 2-for-3 effort with two RBI in a 5-4 win over Utah on 4/29 ... Had a hit in both games of a doubleheader sweep against Portland State on 4/24 ... Went 2-for-7 with a run scored in OSU's series victory over No. 9 Washington from 4/20-22 ... Batted .444 (4-for-9) in the Beavers' series at No. 15 Stanford from 4/14-15 ... Tied a career high with three hits against No. 3 Arizona State on 4/10 ... Scored a pair of runs for the 10th time in her career in a 13-1 win against Cal State Northridge on 3/28 ... Was 2-for-3 with two doubles in a 7-1 win over No. 15 Oregon on 3/26 ... Extended her career-best single-season home run mark with a sixth-inning blast against Harvard (3/11), her third of the year ... Tied career highs with three hits and three RBI in a 5-3 win over Northwestern on 3/2 ... Was 2-for-2 with one RBI in a 4-3 win against Ohio State on 2/24 ... Stole her first base of the season, and fifth of her career against Ohio State ... Tied a career high with three RBI and hit her second home run of the season against San Diego State (2/17) ... Reached base safely in each of the first nine games of the season ... Was 1-for-3 in each game against No. 23 Georgia Tech and McNeese State (2/10) ... Went a perfect 2-for-2 in the season opener against BYU (W, 22-5), with a home run, double, two RBI and two runs ... Hit the first of back-to-back home runs with Desiree Beltran in Oregon State's 16-run second inning against the Cougars.

Career Hitting

Year	Avg	GP-GS	AB	R	H	2B	3B	HR	RBI	BB	SO	SB-ATT
2008	.288	56-55	156	19	45	7	0	1	22	19	21	1-2
2009	.188	44-38	101	9	19	4	0	0	8	12	24	2-2
2011	.259	47-47	139	17	36	9	1	1	14	20	23	1-1
2012	.307	55-55	153	21	47	10	0	3	26	29	20	1-2
TOTAL	.268	202-195	549	66	147	30	1	5	70	80	88	5-7

2012 Oregon State Softball

Player Notes

#22 | RHP/DP PAIGE HALL *Sr. • R/R • Portland, Ore.*

Last Game: 0-for-2, (5/12 vs Arizona)

Streak:

Season-High Hits: 3, Long Beach State (3/8) **Career:** 3, three times
Season-High Runs: 2, two times **Career:** 2, five times
Season-High RBI: 6, BYU (2/9) **Career:** 6, BYU (2/9/12)

Last Pitching Appearance: ND, 0.1 IP, 3 H, 3 R, 3 ER, 0 BB, 0 K (5/10 vs Arizona)

Season-High Inn: 6.1, Cal State Northridge (3/28) **Career:** 8.2, Nevada (2/12/10)
Season-High K: 8, Georgia Tech (2/10) **Career:** 11, Nevada (2/12/10)

2012: Moved into sole possession of fifth place on OSU's all-time strikeouts list when she fanned a pair on 5/4 against No. 1 Cal ... Saved her fifth game of the season against Utah on 4/29, which is tops in the Pac-12, tied for seventh nationally and second all-time in a single season at OSU ... Registered her 10th multi-hit game of the season against Utah on 4/27 (2-for-4) ... Became just the sixth player in Oregon State history to reach 50 victories when she pitched 3.1 innings of scoreless relief to earn the win in game two against Portland State on 4/24 ... Drove in two runs on a double as part of a 2-for-3 effort in the second game of a doubleheader sweep against Portland State on 4/24 ... Notched her 100th career hit in that second game against the Vikings ... Went 1-for-3 with a double and run scored in Oregon State's 3-2 win over No. 9 Washington on 4/22 ... Threw a total of 4.0 innings of relief against the Huskies, surrendering two runs on three hits ... Received both decisions in the Beavers' doubleheader split with No. 3 Arizona State on 4/10, including earning a win with four innings of relief work in game one ... Drove in two of Oregon State's seven runs in an upset of No. 14 UCLA on 4/1 ... Threw a season-high 6.1 innings of relief in a 5-1 win over Cal State Northridge on 3/28 ... Had back-to-back multi-hit games for the second time this season in a doubleheader at Cal State Northridge on 3/28 ... Hit her team-leading sixth home run in a 7-1 win against No. 15 Oregon on 3/26 ... Credited with the win in both Beaver victories over No. 15 Oregon ... Raised her batting average nearly 40 points by going 6-for-13 at the Long Beach State Invitational ... Earned her seventh and eighth wins of the season in back-to-back relief appearances against Pittsburgh and Michigan State ... Lasted a season-high 5.1 innings against the Panthers and did not allow an earned run ... Threw three hitless innings against the Spartans while striking out five ... Hit a game-tying solo home run, her fifth of the season, in a 5-2 win over Michigan State on 3/10 ... Had the third three-hit game of her career against Long Beach State on 3/8 (W, 12-2) ... Notched three saves in four OSU wins at the DeMarini Invitational (Indiana, Northwestern, Cal State Fullerton) ... Was 1-for-4 with her fourth home run of the season in a 5-2 victory over Cal State Fullerton (3/2) ... Hit her third home run of the season, and first since opening day, as part of a 13-0 win against Maine on 2/27 ... Gave up only two earned runs in 8.1 innings of work in the Cathedral City Classic, upping her record to 5-0 in the process ... Was 2-for-3 with three RBI in a victory over Ohio State on 2/24 ... Had hits in back-to-back games against San Diego State (2/17) and Notre Dame (2/18) ... Pitched in relief against San Diego (2/18) and Central Florida (2/19), earning the win in both games ... Struck out eight batters in 3.2 innings of relief work against No. 23 Georgia Tech (2/10) ... Also made relief appearances against Idaho State and BYU on 2/9 ... Blasted two home runs in one inning against BYU in the season-opener, a two-run shot and a grand slam ... Drove in a career-high six of Oregon State's 22 runs against BYU, all in the second inning ... Also scored two runs against the Cougars, tying a career high.

Career Hitting

Year	Avg	GP-GS	AB	R	H	2B	3B	HR	RBI	BB	SO	SB-ATT
2009	.143	40-21	7	0	1	1	0	0	1	0	4	0-0
2010	.321	54-52	134	18	43	7	1	4	19	36	35	0-0
2011	.220	45-42	100	12	22	2	0	7	18	27	20	0-0
2012	.252	55-55	151	15	38	4	0	6	29	22	30	0-0
TOTAL	.265	194-170	392	45	104	14	1	17	67	85	89	0-0

Career Pitching

Year	ERA	W-L	App	GS	CG	SHO	CBO	SV	IP	H	R	ER	BB	SO
2009	3.26	14-12	40	21	10	4	0	1	165.1	203	104	77	42	60
2010	3.63	17-22	51	33	18	5	1	1	222.0	236	151	115	105	176
2011	2.80	6-6	33	12	5	2	4	0	102.2	107	58	41	42	75
2012	2.62	14-3	37	1	0	0	0	5	88.1	78	44	33	34	70
TOTAL	3.22	51-43	161	67	33	11	5	7	578.1	624	357	266	223	381

#9 | C ALLY KUTZ *Jr. • R/R • Mt. Vernon, Wash.*

Last Game: 0-for-2, (5/12 vs Arizona)

Streak:

Season-High Hits: 2, two times **Career:** 4, UIC (3/21/10)
Season-High Runs: 2, two times **Career:** 2, six times
Season-High RBI: 4, Long Beach State (3/8) **Career:** 4, two times

2012: Had her third multi-hit game of the season in a 10-2 victory over Utah on 4/27, driving in two runs ... Went 1-for-2 with a run scored in game one of a doubleheader sweep against Portland State on 4/24 ... Notched one hit in each game against No. 9 Washington from 4/20-22 ... Went 1-for-3 with two RBI in both games two and three of the series, including a home run in a 3-2 win on 4/22 ... Recorded her second multi-hit game of the season against No. 3 Arizona State on 4/10 ... Had her sixth multi-RBI game of the year in a 13-1 win over Cal State Northridge on 3/28 ... Hit a three-run home run and tied a career-high with four RBI against Long Beach State on 3/8 (W, 12-2) ... Drove in two runs in a 5-3 win against Northwestern (3/2) ... Went 1-for-3 with a run and an RBI in a 4-2 win against Colorado State on 2/26 ... Also picked off a runner at third with the bases loaded in the Colorado State game ... Picked off one runner and threw out two others trying to steal to preserve a 2-1 win over Central Florida on 2/19 ... Went a combined 2-for-4 in games against Notre Dame and San Diego on 2/18 ... Was 1-for-3 with a home run and two RBI against No. 20 Nebraska (2/11) ... Hit her first home run in two years to open Oregon State's 16-run second-inning barrage against BYU in the season opener on 2/9 (W, 22-5), a three-run blast ... Tied a career high by scoring two runs in each of the team's first two games (BYU and Idaho State).

Career Hitting

Year	Avg	GP-GS	AB	R	H	2B	3B	HR	RBI	BB	SO	SB-ATT
2010	.253	52-49	146	15	37	7	1	6	23	7	36	0-1
2011	.241	44-43	116	9	28	9	0	0	9	5	17	1-1
2012	.206	55-54	136	14	28	5	0	4	25	12	24	2-3
TOTAL	.234	151-146	398	38	93	21	1	10	57	24	77	3-5

#20 | 1B/OF BAILEE NIEHUS *So. • L/L • McMinnville, Ore.*

Last Game: 0-for-1, (3/28 vs CSUN)

Streak:

Season-High Hits: 1, Maine (2/27) **Career:** 1, Maine (2/27/12)
Season-High Runs: **Career:**
Season-High RBI: 1, Maine (2/27) **Career:** 1, Maine (2/27/12)

2012: Recorded her first career hit and RBI against Maine on 2/27 (W, 13-0) ... Made a pinch-hitting appearance against UCSB (2/17) ... Had her first at-bat of the year in the season opener against BYU (W, 22-5).

Career Hitting

Year	Avg	GP-GS	AB	R	H	2B	3B	HR	RBI	BB	SO	SB-ATT
2011	.000	4-0	4	0	0	0	0	0	0	0	3	0-0
2012	.250	4-0	4	0	1	0	0	0	1	0	2	0-0
TOTAL	.125	8-0	8	0	1	0	0	0	1	0	5	0-0



Player Notes

#25 | INF EMILY RICHARDSON Sr. • R/R • Sacramento, Calif.

Last Game: 0-for-1, (5/12 vs Arizona)

Streak:

Season-High Hits: Career: 2, St. Mary's (3/27/11)

Season-High Runs: 1, two times Career: 2, Seattle (3/11/11)

Season-High RBI: 1, Cal State Northridge (3/28) Career: 1, two times

2012: Had her first start of the season on 5/6 against No. 1 Cal ... Appeared in each of the three games against Utah from 4/27-29 ... Drove in the second run of her career with a bases loaded walk against Cal State Northridge on 3/28 ... Scored her first run of the season against Maine (2/27) ... Also recorded her first assist of the year against Maine (2/27) ... Had her first at-bat of season against Idaho State on 2/10 (W, 16-3).

Career Hitting

Year	Avg	GP-GS	AB	R	H	2B	3B	HR	RBI	BB	SO	SB-ATT
2011	.182	19-6	22	5	4	0	0	0	1	2	6	1-1
2012	.000	11-1	7	2	0	0	0	0	1	2	3	0-0
TOTAL	.138	30-7	29	7	4	0	0	0	2	4	9	1-1

#4 | SS ELIZABETH SANTANA Jr. • R/R • Fontana, Calif.

Last Game: 1-for-3, (5/12 vs Arizona)

Streak: 4g, 5-for-14, R, 3 RBI, 2 SB

Season-High Hits: 3, five times Career: 3, five times

Season-High Runs: 3, Maine (2/27) Career: 3, Maine (2/27/12)

Season-High RBI: 4, Idaho State (2/9) Career: 4, Idaho State (2/9/12)

2012: Notched her 60th hit of the season in a 4-0 win over No. 16 Arizona on 5/11, becoming to first Oregon State player to reach that mark since 2008 ... Had two hits and her sixth stolen base of the season on 5/6 against No. 1 Cal ... Went 2-for-5 with a home run two runs scored and a RBI in a 10-2 win at Utah on 4/27 ... Had two hits and a run scored in the first game of a doubleheader sweep against Portland State on 4/24 ... Went 3-for-4 with two runs scored against No. 9 Washington on 4/21, her fifth three-hit game of the season ... Powered Oregon State to an extra-innings upset of No. 3 Arizona State on 4/10, launching a game-tying solo home run in the seventh and a walk-off two-run job in the ninth ... In three games against No. 14 UCLA had five hits in nine at bats ... Had her second three-hit game of the week after going 3-for-4 in a win over the Bruins on 4/1 ... Launched her first career home run in Pac-12 play, and second of the season, against UCLA on 3/30 ... Hit her third triple of the season in a 5-1 win against Cal State Northridge on 3/28 ... Had her first Pac-12 hit as part of a 3-for-3 effort in a 7-1 win over No. 15 Oregon on 3/25, her third three-hit game of the year ... Hit safely in four of five games at the Long Beach State Invitational ... Had back-to-back 2-for-3 efforts in wins over Pittsburgh and Michigan State ... Notched her fifth multi-RBI game of the season in the Beavers' 3-2 win over Pittsburgh (3/9) ... Was 2-for-4 in wins over Northwestern (5-3) and Cal State Fullerton (5-2) at the DeMarini Invitational ... Launched her first home run in the Orange and Black as part of 13-0 victory over Maine on 2/27 ... Hit Oregon State's first triple of the season against Maine on 2/27 (W, 4-0) ... Went 3-for-3 with two doubles against Iowa State on 2/23 ... Was 6-for-16 at the Campbell/Cartier Classic, including multi-hit efforts against UCSB (2/17) and San Diego (2/18) ... Stole her first base as a Beaver in a 7-2 win over San Diego (2/18) ... Drove in two runs against UCSB on 2/17, her third multi-RBI game of the season ... Went 2-for-4 with two RBI against Georgia Tech (2/10) ... Drove in a career-high four runs as part of a 2-for-3 effort against Idaho State on 2/9 (W, 16-3) ... Was 1-for-3 with an RBI and two runs in the season opener against BYU (W, 22-5) ... Started her Oregon State career on a three-game hitting streak, going 5-for-10 with seven RBI and three runs scored.

Career Hitting

Year	Avg	GP-GS	AB	R	H	2B	3B	HR	RBI	BB	SO	SB-ATT
2012	.349	55-55	175	35	61	6	3	5	36	24	18	7-7
TOTAL	.349	55-55	175	35	61	6	3	5	36	24	18	7-7



2012 Oregon State Softball

Pitchers' Appearances

#55 Andreana, Tina

Date	OPPONENT	GS	IP	H	R	ER	BB	SO	2B	3B	HR	WP	BK	HBP	IBB	Score	W	L	SV	ERA	
Feb 09, 2012	Idaho State	*	2.1	2	2	1	1	3	1	0	0	0	0	2	0	16-3	0	0	0	3.00	
Feb 10, 2012	Georgia Tech	*	1.1	3	4	4	0	0	0	0	1	0	0	2	0	8-9	0	1	0	9.55	
Feb 11, 2012	Nebraska	*	6.0	4	3	3	7	5	2	0	0	0	0	0	0	11-3	1	1	0	5.79	
Feb 17, 2012	San Diego State	*	9.0	9	7	5	1	11	3	0	0	0	0	1	0	6-7	1	2	0	4.88	
Feb 18, 2012	San Diego	*	2.0	2	2	2	0	1	1	0	0	0	0	0	0	7-2	1	2	0	5.08	
Feb 23, 2012	New Mexico	*	4.0	4	5	2	3	5	3	0	1	0	0	2	0	6-10	1	3	0	4.82	
Feb 24, 2012	Ohio State	*	7.0	7	3	2	2	1	0	0	0	0	0	0	0	4-3	2	3	0	4.20	
Feb 24, 2012	Iowa	*	0.1	2	1	1	0	0	2	0	0	0	0	0	0	2-1	2	3	0	4.38	
Feb 26, 2012	Colorado State	*	1.0	3	2	2	1	1	1	0	1	0	0	0	0	4-2	2	3	0	4.67	
Mar 02, 2012	Northwestern	*	5.1	5	3	0	2	7	2	0	0	1	0	0	0	5-3	3	3	0	4.02	
Mar 03, 2012	Michigan State		2.0	0	0	0	1	4	0	0	0	0	0	0	0	11-6	3	3	1	3.82	
Mar 03, 2012	Cal State Fullerton	*	5.0	2	2	0	2	2	0	0	0	1	0	2	0	5-2	4	3	1	3.40	
Mar 08, 2012	North Carolina	*	7.0	8	1	1	3	5	0	0	0	0	0	0	0	8-1	5	3	1	3.08	
Mar 10, 2012	Notre Dame	*	0.0	4	4	4	0	0	2	0	0	0	0	0	0	1-8	5	4	1	3.61	
Mar 11, 2012	Harvard		2.0	2	2	1	1	0	0	0	0	0	0	1	0	2-3	5	5	1	3.61	
Mar 24, 2012	OREGON	*	4.0	2	4	4	2	2	0	0	1	1	0	1	0	2-8	5	6	1	3.84	
Mar 26, 2012	OREGON	*	3.0	1	0	0	4	2	0	0	0	0	0	1	0	7-1	5	6	1	3.65	
Mar 28, 2012	Cal State Northridge-1*		2.0	1	1	1	1	1	1	0	0	0	0	0	0	13-1	5	6	1	3.65	
Mar 28, 2012	Cal State Northridge-2*		0.2	1	1	1	3	0	0	0	0	0	0	0	0	5-1	5	6	1	3.72	
Mar 31, 2012	UCLA	*	4.0	3	5	5	7	1	0	0	1	1	0	1	0	0-8	5	7	1	4.01	
Apr 01, 2012	UCLA		0.2	1	0	0	2	0	0	0	0	1	0	0	0	7-5	5	7	2	3.98	
Apr 10, 2012	ARIZONA STATE-1	*	5.0	4	0	0	3	0	0	0	0	1	0	0	0	4-2	5	7	2	3.71	
Apr 13, 2012	Stanford	*	4.0	4	3	3	5	2	2	0	0	0	0	0	0	4-8	5	8	2	3.79	
Apr 15, 2012	Stanford	*	0.0	4	6	6	1	0	0	0	0	0	0	1	0	0-8	5	9	2	4.33	
Apr 20, 2012	WASHINGTON	*	6.0	7	3	3	4	2	2	0	0	3	0	0	0	4-3	6	9	2	4.27	
Apr 22, 2012	WASHINGTON	*	7.0	7	2	1	3	4	1	0	0	0	0	1	0	3-2	7	9	2	4.01	
Apr 24, 2012	PORTLAND STATE-1	*	7.0	2	0	0	1	9	0	0	0	0	0	0	0	2-0	8	9	2	3.73	
Apr 27, 2012	Utah	*	3.0	4	1	1	2	3	1	0	0	0	0	1	0	10-2	8	9	2	3.69	
Apr 28, 2012	Utah		0.0	1	3	3	1	0	0	0	1	0	0	1	0	6-8	8	9	2	3.89	
Apr 29, 2012	Utah	*	4.1	6	4	4	5	1	1	0	1	0	0	0	0	5-4	9	9	2	4.00	
May 04, 2012	CALIFORNIA	*	3.0	3	5	3	4	0	0	0	0	0	0	2	0	1-9	9	10	2	4.08	
May 06, 2012	CALIFORNIA		0.0	0	1	1	2	0	0	0	0	0	0	0	0	1-4	9	10	2	4.15	
May 10, 2012	Arizona	*	3.0	7	5	5	2	2	0	0	1	0	0	0	0	4-12	9	11	2	4.35	
May 12, 2012	Arizona	*	0.0	0	0	0	0	0	0	0	0	0	0	0	0	1-3	9	11	2	4.35	
Totals			29	111.0	115	85	69	76	74	25	0	8	9	0	19	0	175-152	9	11	2	4.35



2012 Oregon State Softball

Pitchers' Appearances

#8 Demore, Marina

Date	OPPONENT	GS	IP	H	R	ER	BB	SO	2B	3B	HR	WP	BK	HBP	IBB	Score	W	L	SV	ERA
Feb 09, 2012	Brigham Young	*	3.0	6	5	3	1	4	0	0	1	0	0	0	0	22-5	1	0	0	7.00
Feb 09, 2012	Idaho State		1.0	0	0	0	1	0	0	0	0	0	0	0	0	16-3	1	0	0	5.25
Feb 10, 2012	Georgia Tech		1.0	1	1	1	0	2	0	0	0	1	0	1	0	8-9	1	0	0	5.60
Feb 10, 2012	McNeese State	*	8.0	3	3	2	4	9	0	0	1	0	0	0	0	2-3	1	1	0	3.23
Feb 17, 2012	UC Santa Barbara	*	5.0	4	0	0	0	3	0	0	0	0	0	0	0	6-0	2	1	0	2.33
Feb 18, 2012	Notre Dame	*	7.0	4	2	1	1	5	1	1	0	0	0	0	0	3-2	3	1	0	1.96
Feb 19, 2012	Central Florida	*	4.1	2	1	0	3	3	1	0	0	1	0	0	0	2-1	3	1	0	1.67
Feb 23, 2012	Iowa State		2.2	4	2	2	1	3	1	0	0	0	0	0	0	5-4	3	1	0	1.97
Feb 23, 2012	New Mexico		1.0	2	3	3	1	2	0	0	2	0	0	0	0	6-10	3	1	0	2.55
Feb 24, 2012	Iowa		5.0	1	0	0	2	4	0	0	0	0	0	0	0	2-1	4	1	0	2.21
Feb 26, 2012	Colorado State		4.2	3	0	0	2	6	0	0	0	0	0	0	0	4-2	4	1	1	1.97
Feb 27, 2012	Maine-1	*	7.0	3	0	0	4	4	0	0	0	0	0	0	0	4-0	5	1	1	1.69
Mar 02, 2012	Indiana	*	6.2	5	3	3	2	3	1	1	0	1	0	0	0	4-3	6	1	1	1.86
Mar 03, 2012	Michigan State		1.0	1	2	2	1	1	1	0	0	0	0	1	0	11-6	6	1	1	2.08
Mar 04, 2012	Florida Int'l	*	4.1	3	1	1	2	5	1	0	0	0	0	0	0	1-4	6	1	1	2.04
Mar 08, 2012	Long Beach State	*	5.0	8	2	2	3	4	1	1	0	0	0	0	0	12-2	7	1	1	2.10
Mar 09, 2012	Pittsburgh		1.1	1	0	0	1	2	0	0	0	0	0	0	0	3-2	7	1	2	2.06
Mar 10, 2012	Michigan State	*	4.0	3	2	2	1	6	1	0	1	0	0	1	0	5-2	7	1	2	2.14
Mar 11, 2012	Harvard	*	1.0	2	1	1	0	1	1	0	0	1	0	0	0	2-3	7	1	2	2.21
Mar 24, 2012	OREGON		1.0	2	1	1	0	0	1	0	0	0	0	0	0	2-8	7	1	2	2.27
Mar 25, 2012	OREGON	*	5.2	6	4	4	2	5	1	0	0	0	0	0	0	5-4	7	1	2	2.46
Mar 30, 2012	UCLA	*	3.1	6	8	5	2	4	1	0	3	0	0	1	0	4-8	7	2	2	2.78
Apr 13, 2012	Stanford		2.0	4	2	2	1	2	1	0	0	0	0	0	0	4-8	7	2	2	2.88
Apr 14, 2012	Stanford		1.0	1	2	2	2	1	0	1	0	0	0	0	0	0-7	7	2	2	3.01
Apr 21, 2012	WASHINGTON		3.2	3	1	1	1	2	1	0	1	0	0	0	0	6-7	7	3	2	2.97
Apr 28, 2012	Utah	*	3.2	3	3	3	2	3	1	1	0	0	0	0	0	6-8	7	4	2	3.07
May 05, 2012	CALIFORNIA	*	6.0	5	4	4	7	5	1	0	2	1	0	1	0	2-4	7	5	2	3.17
May 06, 2012	CALIFORNIA		5.0	2	2	2	2	2	0	0	1	0	0	0	0	1-4	7	5	2	3.15
May 11, 2012	Arizona	*	7.0	4	0	0	3	5	1	0	0	0	0	0	0	4-0	8	5	2	2.96
May 12, 2012	Arizona		6.1	7	3	3	2	6	1	0	2	0	0	2	0	1-3	8	6	2	2.97
Totals		16	117.2	99	58	50	54	102	18	5	14	5	0	7	0	153-123	8	6	2	2.97

#99 Feickert, Aryn

Date	OPPONENT	GS	IP	H	R	ER	BB	SO	2B	3B	HR	WP	BK	HBP	IBB	Score	W	L	SV	ERA
Feb 17, 2012	UC Santa Barbara		2.0	1	0	0	1	1	0	0	0	0	0	0	0	6-0	0	0	0	0.00
Feb 18, 2012	San Diego		2.0	1	0	0	0	0	0	0	0	0	0	0	0	7-2	0	0	0	0.00
Feb 23, 2012	Iowa State	*	2.0	2	0	0	2	2	1	0	0	0	0	0	0	5-4	0	0	0	0.00
Feb 27, 2012	Maine-2	*	5.0	2	0	0	0	4	2	0	0	0	0	0	0	13-0	1	0	0	0.00
Mar 03, 2012	Michigan State	*	0.2	0	0	0	2	1	0	0	0	0	1	0	0	11-6	1	0	0	0.00
Mar 09, 2012	Pittsburgh	*	0.1	1	1	1	0	1	0	0	1	0	0	0	0	3-2	1	0	0	0.58
Mar 10, 2012	Notre Dame		4.0	1	1	0	0	4	0	0	0	1	0	0	0	1-8	1	0	0	0.44
Mar 24, 2012	OREGON		1.1	4	3	2	1	1	1	1	1	0	0	0	0	2-8	1	0	0	1.21
Mar 28, 2012	Cal State Northridge-1		3.0	2	0	0	0	0	0	0	0	0	0	0	0	13-1	2	0	0	1.03
Mar 30, 2012	UCLA		2.2	2	0	0	1	1	0	0	0	0	0	0	0	4-8	2	0	0	0.91
Apr 01, 2012	UCLA	*	6.1	7	5	5	2	2	0	0	2	0	0	1	0	7-5	3	0	0	1.91
Apr 10, 2012	ARIZONA STATE-2	*	5.0	5	1	1	2	1	0	0	0	0	0	0	0	2-3	3	0	0	1.83
Apr 14, 2012	Stanford	*	5.0	6	5	5	4	1	1	0	1	0	0	0	0	0-7	3	1	0	2.49
Apr 15, 2012	Stanford		4.0	4	2	2	2	0	2	0	1	0	0	1	0	0-8	3	1	0	2.58
Apr 21, 2012	WASHINGTON	*	2.1	5	4	4	0	0	1	0	2	0	0	0	0	6-7	3	1	0	3.07
Apr 24, 2012	PORTLAND STATE-2	*	3.2	4	2	2	2	2	0	0	1	0	0	0	0	3-2	3	1	0	3.12
May 10, 2012	Arizona		1.2	5	4	4	3	1	2	0	0	0	0	1	0	4-12	3	1	0	3.57
Totals		9	51.0	52	28	26	22	22	10	1	9	1	1	3	0	87-83	3	1	0	3.57



2012 Oregon State Softball

Pitchers' Appearances

#22 Hall, Paige

Date	OPPONENT	GS	IP	H	R	ER	BB	SO	2B	3B	HR	WP	BK	HBP	IBB	Score	W	L	SV	ERA
Feb 09, 2012	Brigham Young		2.0	2	0	0	0	2	1	0	0	0	0	0	0	22-5	0	0	0	0.00
Feb 09, 2012	Idaho State		1.2	1	1	1	2	1	0	0	0	0	0	0	0	16-3	1	0	0	1.91
Feb 10, 2012	Georgia Tech		3.2	7	4	4	3	8	1	1	1	0	0	2	0	8-9	1	0	0	4.77
Feb 18, 2012	San Diego		3.0	2	0	0	1	2	1	0	0	0	0	1	0	7-2	2	0	0	3.39
Feb 19, 2012	Central Florida		2.2	0	0	0	1	1	0	0	0	0	0	0	0	2-1	3	0	0	2.69
Feb 23, 2012	Iowa State		2.1	4	2	2	0	3	1	0	0	0	0	0	0	5-4	4	0	0	3.20
Feb 23, 2012	New Mexico		2.0	4	2	0	2	0	0	0	0	0	0	0	0	6-10	4	0	0	2.83
Feb 24, 2012	Iowa		2.2	2	0	0	2	3	0	0	0	0	0	1	0	2-1	4	0	0	2.45
Feb 26, 2012	Colorado State		1.1	2	0	0	2	1	0	0	0	0	0	0	0	4-2	5	0	0	2.30
Mar 02, 2012	Indiana		0.1	0	0	0	0	0	0	0	0	0	0	0	0	4-3	5	0	1	2.26
Mar 02, 2012	Northwestern		1.2	0	0	0	0	1	0	0	0	0	0	1	0	5-3	5	0	2	2.10
Mar 03, 2012	Michigan State		3.1	6	4	4	1	2	1	0	0	0	0	1	0	11-6	6	0	2	2.89
Mar 03, 2012	Cal State Fullerton		2.0	1	0	0	1	2	0	0	0	0	0	0	0	5-2	6	0	3	2.69
Mar 04, 2012	Florida Int'l		2.2	4	3	0	1	3	0	0	0	0	0	0	0	1-4	6	1	3	2.46
Mar 08, 2012	Long Beach State		2.0	0	0	0	1	2	0	0	0	0	0	1	0	12-2	6	1	3	2.31
Mar 09, 2012	Pittsburgh		5.1	3	1	0	0	2	1	0	0	0	0	1	0	3-2	7	1	3	1.99
Mar 10, 2012	Michigan State		3.0	0	0	0	1	5	0	0	0	0	0	0	0	5-2	8	1	3	1.85
Mar 10, 2012	Notre Dame		2.0	4	3	3	1	1	1	0	1	0	0	0	0	1-8	8	1	3	2.24
Mar 11, 2012	Harvard		3.0	2	0	0	1	1	0	0	0	2	0	0	0	2-3	8	1	3	2.10
Mar 24, 2012	OREGON		0.2	0	0	0	1	0	0	0	0	0	0	1	0	2-8	8	1	3	2.07
Mar 25, 2012	OREGON		2.1	1	0	0	1	2	1	0	0	1	0	0	0	5-4	9	1	3	1.97
Mar 26, 2012	OREGON		4.0	2	1	1	0	3	1	0	0	0	0	0	0	7-1	10	1	3	1.96
Mar 28, 2012	Cal State Northridge-2		6.1	2	0	0	1	2	1	0	0	0	0	0	0	5-1	11	1	3	1.75
Mar 31, 2012	UCLA		0.2	3	3	3	2	0	0	0	0	0	0	0	0	0-8	11	1	3	2.08
Apr 10, 2012	ARIZONA STATE-1		4.0	5	2	1	1	3	1	0	0	0	0	0	0	4-2	12	1	3	2.06
Apr 10, 2012	ARIZONA STATE-2		2.0	1	2	2	1	0	0	0	1	0	0	0	0	2-3	12	2	3	2.21
Apr 13, 2012	Stanford		0.0	2	3	3	0	0	0	0	1	0	0	1	0	4-8	12	2	3	2.52
Apr 20, 2012	WASHINGTON		1.0	0	0	0	0	0	0	0	0	0	0	0	0	4-3	12	2	4	2.48
Apr 21, 2012	WASHINGTON		3.0	3	2	2	2	1	1	0	1	0	0	0	0	6-7	12	2	4	2.58
Apr 24, 2012	PORTLAND STATE-2		3.1	1	0	0	0	5	0	0	0	0	0	0	0	3-2	13	2	4	2.46
Apr 27, 2012	Utah		4.0	1	1	1	2	3	0	0	0	0	0	1	0	10-2	14	2	4	2.42
Apr 28, 2012	Utah		2.1	5	2	2	1	1	0	0	1	1	0	0	0	6-8	14	2	4	2.53
Apr 29, 2012	Utah		2.2	2	0	0	1	2	0	0	0	0	0	0	0	5-4	14	2	5	2.45
May 04, 2012	CALIFORNIA		2.0	2	4	0	0	2	0	0	1	0	0	0	0	1-9	14	2	5	2.39
May 05, 2012	CALIFORNIA		1.0	0	0	0	0	3	0	0	0	0	0	0	0	2-4	14	2	5	2.36
May 06, 2012	CALIFORNIA	*	2.0	1	1	1	1	3	1	0	0	0	0	1	0	1-4	14	3	5	2.39
May 10, 2012	Arizona		0.1	3	3	3	0	0	0	0	2	0	0	0	0	4-12	14	3	5	2.62
Totals		1	88.1	78	44	33	34	70	13	1	9	4	0	12	0	192-162	14	3	5	2.62



2012 Oregon State Softball

Oregon State Starting Lineups By Order

Date	Opponent	1	2	3	4	5	6	7	8	9
2/9	BYU	Gilmore	Bouska	Santana	Hall	Cavestany	Guzy	Beltran	Kutz	Garcia
2/9	Idaho State	Gilmore	Bouska	Santana	Hall	Cavestany	Guzy	Beltran	Kutz	Garcia
2/10	Georgia Tech	Gilmore	Bouska	Santana	Hall	Cavestany	Guzy	Beltran	Kutz	Garcia
2/10	McNeese State	Gilmore	Bouska	Santana	Hall	Cavestany	Guzy	Beltran	Kutz	Garcia
2/11	Nebraska	Gilmore	Bouska	Santana	Hall	Cavestany	Guzy	Beltran	Kutz	Garcia
2/17	UCSB	Gilmore	Bouska	Santana	Hall	Cavestany	Beltran	Guzy	Kutz	Garcia
2/17	San Diego State	Gilmore	Bouska	Santana	Hall	Cavestany	Beltran	Guzy	Kutz	Garcia
2/18	Notre Dame	Gilmore	Bouska	Santana	Hall	Guzy	Beltran	Cavestany	Kutz	Garcia
2/18	San Diego	Gilmore	Bouska	Santana	Hall	Guzy	Beltran	Kutz	Cavestany	Garcia
2/19	Central Florida	Gilmore	Bouska	Santana	Hall	Guzy	Beltran	Kutz	Cavestany	Garcia
2/23	Iowa State	Gilmore	Bouska	Santana	Beltran	Guzy	Cavestany	Hall	Kutz	Garcia
2/23	New Mexico	Gilmore	Bouska	Santana	Beltran	Guzy	Cavestany	Hall	Kutz	Garcia
2/24	Ohio State	Gilmore	Bouska	Santana	Beltran	Guzy	Cavestany	Hall	Kutz	Garcia
2/24	Iowa	Gilmore	Bouska	Santana	Beltran	Guzy	Cavestany	Hall	Kutz	Garcia
2/26	Colorado State	Gilmore	Bouska	Santana	Beltran	Guzy	Cavestany	Hall	Kutz	Garcia
2/27	Maine-1	Gilmore	Bouska	Santana	Beltran	Guzy	Cavestany	Hall	Kutz	Garcia
2/27	Maine-2	Gilmore	Bouska	Santana	Beltran	Guzy	Kutz	Hall	Brenner	Garcia
3/2	Indiana	Gilmore	Bouska	Santana	Beltran	Guzy	Hall	Kutz	Cavestany	Garcia
3/2	Northwestern	Gilmore	Bouska	Santana	Beltran	Guzy	Hall	Kutz	Cavestany	Garcia
3/3	Michigan State	Gilmore	Bouska	Santana	Beltran	Guzy	Hall	Kutz	Cavestany	Garcia
3/3	Cal State Fullerton	Gilmore	Bouska	Santana	Beltran	Guzy	Hall	Kutz	Cavestany	Garcia
3/4	Florida International	Gilmore	Bouska	Santana	Beltran	Guzy	Hall	Kutz	Cavestany	Garcia
3/8	North Carolina	Gilmore	Bouska	Santana	Beltran	Hall	Guzy	Kutz	Cavestany	Garcia
3/8	Long Beach State	Gilmore	Bouska	Santana	Beltran	Hall	Guzy	Kutz	Cavestany	Garcia
3/9	Pittsburgh	Gilmore	Bouska	Santana	Beltran	Hall	Guzy	Kutz	Cavestany	Garcia
3/10	Michigan State	Gilmore	Bouska	Santana	Beltran	Hall	Guzy	Kutz	Cavestany	Garcia
3/10	Notre Dame	Gilmore	Bouska	Santana	Beltran	Hall	Guzy	Kutz	Cavestany	Garcia
3/11	Harvard	Gilmore	Bouska	Santana	Hall	Guzy	Kutz	Cavestany	Chandler	Garcia
3/24	Oregon	Gilmore	Bouska	Santana	Beltran	Hall	Guzy	Kutz	Cavestany	Garcia
3/25	Oregon	Gilmore	Bouska	Santana	Beltran	Hall	Guzy	Kutz	Cavestany	Garcia
3/26	Oregon	Gilmore	Bouska	Santana	Beltran	Hall	Guzy	Kutz	Cavestany	Garcia
3/28	CSUN-1	Gilmore	Santana	Beltran	Hall	Guzy	Brenner	Kutz	Cavestany	Garcia
3/28	CSUN-2	Gilmore	Santana	Beltran	Hall	Guzy	Brenner	Kutz	Cavestany	Garcia
3/30	UCLA	Gilmore	Bouska	Santana	Beltran	Hall	Guzy	Kutz	Cavestany	Garcia
3/31	UCLA	Gilmore	Santana	Beltran	Hall	Brenner	Guzy	Kutz	Cavestany	Garcia
4/1	UCLA	Gilmore	Santana	Beltran	Hall	Brenner	Guzy	Kutz	Cavestany	Garcia
4/10	Arizona State-1	Gilmore	Santana	Beltran	Hall	Brenner	Guzy	Kutz	Cavestany	Garcia
4/10	Arizona State-2	Gilmore	Santana	Beltran	Hall	Brenner	Guzy	Kutz	Cavestany	Garcia
4/13	Stanford	Gilmore	Santana	Beltran	Hall	Brenner	Guzy	Kutz	Cavestany	Garcia
4/14	Stanford	Santana	Gilmore	Beltran	Hall	Guzy	Kutz	Cavestany	Garcia	Bouska
4/15	Stanford	Santana	Gilmore	Guzy	Beltran	Hall	Kutz	Cavestany	Garcia	Bouska
4/20	Washington	Santana	Gilmore	Guzy	Beltran	Hall	Kutz	Cavestany	Garcia	Bouska
4/21	Washington	Santana	Gilmore	Guzy	Beltran	Hall	Kutz	Cavestany	Garcia	Bouska
4/22	Washington	Santana	Gilmore	Guzy	Beltran	Hall	Kutz	Cavestany	Garcia	Bouska
4/24	Portland State-1	Santana	Gilmore	Guzy	Beltran	Hall	Kutz	Cavestany	Garcia	Bouska
4/24	Portland State-2	Santana	Gilmore	Guzy	Hall	Brenner	Beltran	Cavestany	Garcia	Bouska
4/27	Utah	Santana	Gilmore	Guzy	Hall	Beltran	Kutz	Cavestany	Garcia	Bouska
4/28	Utah	Santana	Gilmore	Guzy	Hall	Beltran	Kutz	Cavestany	Garcia	Bouska
4/29	Utah	Gilmore	Bouska	Santana	Guzy	Beltran	Cavestany	Hall	Kutz	Garcia
5/4	Cal	Gilmore	Bouska	Santana	Guzy	Beltran	Cavestany	Hall	Kutz	Garcia
5/5	Cal	Gilmore	Bouska	Santana	Guzy	Beltran	Cavestany	Hall	Kutz	Garcia
5/6	Cal	Gilmore	Bouska	Santana	Guzy	Cavestany	Brenner	Hall	Kutz	Garcia
5/10	Arizona	Gilmore	Bouska	Santana	Guzy	Cavestany	Beltran	Hall	Kutz	Garcia
5/11	Arizona	Gilmore	Bouska	Santana	Guzy	Cavestany	Beltran	Hall	Kutz	Garcia
5/12	Arizona	Gilmore	Bouska	Santana	Guzy	Cavestany	Beltran	Hall	Kutz	Garcia



2012 Oregon State Softball

Oregon State Starting Lineups By Position

Date	Opponent	P	C	1B	2B	3B	SS	LF	CF	RF	DP
2/9	BYU	Demore	Kutz	Guzy	Garcia	Beltran	Santana	Cavestany	Gilmore	Bouska	Hall
2/9	Idaho State	Andreana	Kutz	Guzy	Garcia	Beltran	Santana	Cavestany	Gilmore	Bouska	Hall
2/10	Georgia Tech	Andreana	Kutz	Guzy	Garcia	Beltran	Santana	Cavestany	Gilmore	Bouska	Hall
2/10	McNeese State	Demore	Kutz	Guzy	Garcia	Beltran	Santana	Cavestany	Gilmore	Bouska	Hall
2/11	Nebraska	Andreana	Kutz	Guzy	Garcia	Beltran	Santana	Cavestany	Gilmore	Bouska	Hall
2/17	UCSB	Demore	Kutz	Guzy	Garcia	Beltran	Santana	Cavestany	Gilmore	Bouska	Hall
2/17	San Diego State	Andreana	Kutz	Guzy	Garcia	Beltran	Santana	Cavestany	Gilmore	Bouska	Hall
2/18	Notre Dame	Demore	Kutz	Guzy	Garcia	Beltran	Santana	Cavestany	Gilmore	Bouska	Hall
2/18	San Diego	Andreana	Kutz	Guzy	Garcia	Beltran	Santana	Cavestany	Gilmore	Bouska	Hall
2/19	Central Florida	Demore	Kutz	Guzy	Garcia	Beltran	Santana	Cavestany	Gilmore	Bouska	Hall
2/23	Iowa State	Feickert	Kutz	Guzy	Garcia	Beltran	Santana	Cavestany	Gilmore	Bouska	Hall
2/23	New Mexico	Andreana	Kutz	Guzy	Garcia	Beltran	Santana	Cavestany	Gilmore	Bouska	Hall
2/24	Ohio State	Andreana	Kutz	Guzy	Garcia	Beltran	Santana	Cavestany	Gilmore	Bouska	Hall
2/24	Iowa	Andreana	Kutz	Guzy	Garcia	Beltran	Santana	Cavestany	Gilmore	Bouska	Hall
2/26	Colorado State	Andreana	Kutz	Guzy	Garcia	Beltran	Santana	Cavestany	Gilmore	Bouska	Hall
2/27	Maine-1	Demore	Kutz	Guzy	Garcia	Beltran	Santana	Cavestany	Gilmore	Bouska	Hall
2/27	Maine-2	Feickert	Kutz	Guzy	Garcia	Beltran	Santana	Bouska	Gilmore	Brenner	Hall
3/2	Indiana	Demore	Kutz	Guzy	Garcia	Beltran	Santana	Cavestany	Gilmore	Bouska	Hall
3/2	Northwestern	Andreana	Kutz	Guzy	Garcia	Beltran	Santana	Cavestany	Gilmore	Bouska	Hall
3/3	Michigan State	Feickert	Kutz	Guzy	Garcia	Beltran	Santana	Cavestany	Gilmore	Bouska	Hall
3/3	Cal State Fullerton	Andreana	Kutz	Guzy	Garcia	Beltran	Santana	Cavestany	Gilmore	Bouska	Hall
3/4	Florida International	Demore	Kutz	Guzy	Garcia	Beltran	Santana	Cavestany	Gilmore	Bouska	Hall
3/8	North Carolina	Andreana	Kutz	Guzy	Garcia	Beltran	Santana	Cavestany	Gilmore	Bouska	Hall
3/8	Long Beach State	Demore	Kutz	Guzy	Garcia	Beltran	Santana	Cavestany	Gilmore	Bouska	Hall
3/9	Pittsburgh	Feickert	Kutz	Guzy	Garcia	Beltran	Santana	Cavestany	Gilmore	Bouska	Hall
3/10	Michigan State	Demore	Kutz	Guzy	Garcia	Beltran	Santana	Cavestany	Gilmore	Bouska	Hall
3/10	Notre Dame	Andreana	Kutz	Guzy	Garcia	Beltran	Santana	Cavestany	Gilmore	Bouska	Hall
3/11	Harvard	Demore	Kutz	Guzy	Garcia	Chandler	Santana	Cavestany	Gilmore	Bouska	Hall
3/24	Oregon	Andreana	Kutz	Guzy	Garcia	Beltran	Santana	Cavestany	Gilmore	Bouska	Hall
3/25	Oregon	Demore	Kutz	Guzy	Garcia	Beltran	Santana	Cavestany	Gilmore	Bouska	Hall
3/26	Oregon	Andreana	Kutz	Guzy	Garcia	Beltran	Santana	Cavestany	Gilmore	Bouska	Hall
3/28	CSUN-1	Andreana	Kutz	Guzy	Garcia	Beltran	Santana	Cavestany	Gilmore	Brenner	Hall
3/28	CSUN-2	Andreana	Kutz	Guzy	Garcia	Beltran	Santana	Cavestany	Gilmore	Brenner	Hall
3/30	UCLA	Demore	Kutz	Guzy	Garcia	Beltran	Santana	Cavestany	Gilmore	Bouska	Hall
3/31	UCLA	Andreana	Kutz	Guzy	Garcia	Beltran	Santana	Cavestany	Gilmore	Brenner	Hall
4/1	UCLA	Feickert	Kutz	Guzy	Garcia	Beltran	Santana	Cavestany	Gilmore	Brenner	Hall
4/10	Arizona State-1	Andreana	Kutz	Guzy	Garcia	Beltran	Santana	Cavestany	Gilmore	Brenner	Hall
4/10	Arizona State-2	Feickert	Kutz	Guzy	Garcia	Beltran	Santana	Cavestany	Gilmore	Brenner	Hall
4/13	Stanford	Andreana	Kutz	Guzy	Garcia	Beltran	Santana	Cavestany	Gilmore	Brenner	Hall
4/14	Stanford	Feickert	Kutz	Guzy	Garcia	Beltran	Santana	Cavestany	Gilmore	Bouska	Hall
4/15	Stanford	Andreana	Kutz	Guzy	Garcia	Beltran	Santana	Cavestany	Gilmore	Bouska	Hall
4/20	Washington	Andreana	Kutz	Guzy	Garcia	Beltran	Santana	Cavestany	Gilmore	Bouska	Hall
4/21	Washington	Feickert	Kutz	Guzy	Garcia	Beltran	Santana	Cavestany	Gilmore	Bouska	Hall
4/22	Washington	Andreana	Kutz	Guzy	Garcia	Beltran	Santana	Cavestany	Gilmore	Bouska	Hall
4/24	Portland State-1	Andreana	Kutz	Guzy	Garcia	Beltran	Santana	Cavestany	Gilmore	Bouska	Hall
4/24	Portland State-2	Feickert	Gilmore	Guzy	Garcia	Beltran	Santana	Cavestany	Bouska	Brenner	Hall
4/27	Utah	Andreana	Kutz	Guzy	Garcia	Beltran	Santana	Cavestany	Gilmore	Bouska	Hall
4/28	Utah	Demore	Kutz	Guzy	Garcia	Beltran	Santana	Cavestany	Gilmore	Bouska	Hall
4/29	Utah	Andreana	Kutz	Guzy	Garcia	Beltran	Santana	Cavestany	Gilmore	Bouska	Hall
5/4	Cal	Andreana	Kutz	Guzy	Garcia	Beltran	Santana	Cavestany	Gilmore	Bouska	Hall
5/5	Cal	Demore	Kutz	Guzy	Garcia	Beltran	Santana	Cavestany	Gilmore	Bouska	Hall
5/6	Cal	Hall	Kutz	Guzy	Garcia	Richardson	Santana	Cavestany	Gilmore	Bouska	Brenner
5/10	Arizona	Andreana	Kutz	Guzy	Garcia	Beltran	Santana	Cavestany	Gilmore	Bouska	Hall
5/11	Arizona	Demore	Kutz	Guzy	Garcia	Beltran	Santana	Cavestany	Gilmore	Bouska	Hall
5/12	Arizona	Andreana	Kutz	Guzy	Garcia	Beltran	Santana	Cavestany	Gilmore	Bouska	Hall



2012 Oregon State Softball

Team Superlatives

Offense

Most At Bats	34 vs. San Diego State (2/17)
Most Runs Scored	22 vs. BYU (2/9) *school record
Most Hits	15 vs. BYU (2/9)
Most RBI	20 vs. BYU (2/9) *school record
Most Doubles	3, four times
Most Triples	1, five times
Most Home Runs	5 vs. BYU (2/9) *T-school record
Most Walks	13 vs. Long Beach State (3/8)
Most Strikeouts	12 vs. California (5/6)
Most Stolen Bases	4, two times
Most Hit By Pitch	5 vs. North Carolina (3/8)
Most Runners LOB	12 vs. North Carolina (3/8)

Fielding

Most Putouts	27, three times
Most Assists	16 vs. Arizona State (4/10)
Most Errors	4, two times
Most DPs Turned	2, three times

Pitching

Most Innings Pitched	9.0, three times
Most Runs Allowed	12 vs. Arizona (5/10)
Most Earned Runs Allowed	12 vs. Arizona (5/10)
Most Walks Allowed	9 vs. UCLA (3/31)
Most Strikeouts	11, two times
Most Hits Allowed	15 vs. Arizona (5/10)

Miscellaneous

Longest Winning Streak	nine games
Longest Losing Streak	four games
Longest Game, Innings	nine innings

Individual Superlatives

Offense

Most At Bats	5, six times
Most Runs Scored	3, seven times
Most Hits	3, 17 times
Most RBI	6, Paige Hall vs. BYU (2/9)
Most Doubles	2, two times
Most Triples	1, six times
Most Home Runs	2, three times
Most Total Bases	9, Dani Gilmore vs. Utah (4/29)
Most Walks	4, Dani Gilmore vs. Long Beach State (3/8)
Most Strikeouts	3, five times
Most Stolen Bases	2, four times

Fielding

Most Putouts	13, Erin Guzy (three times)
Most Assists	7, Desiree Beltran vs. Arizona State (4/10)
Most Errors	3, Ya Garcia vs. Northwestern (3/2)

Pitching

Most Innings Pitched	9.0, Tina Andreana vs. San Diego State (2/17)
Most Runs Allowed	8, Marina Demore vs. UCLA (3/30)
Most Earned Runs Allowed	6, Tina Andreana vs. Stanford (4/15)
Most Walks Allowed	7, three times
Most Strikeouts	11, Tina Andreana vs. San Diego State (2/17)
Most Hits Allowed	9, Tina Andreana vs. San Diego State (2/17)

The Last Time

Offense

Hit two home runs/game	4/29/2012, Dani Gilmore vs. Utah
Hit two home runs/inning	2/9/2012, Paige Hall vs. BYU
Hit three home runs	2/14/2010, Mary Claire Brenner vs. Southern Utah
Hit grand slam	2/11/2012, Lea Cavestany vs. Nebraska
Leadoff home run	2/17/2012, Dani Gilmore vs. San Diego State
Walkoff home run	4/10/2012, Elizabeth Santana vs. Arizona State
Walkoff home run (mercy rule)	3/27/2010, Dani Chisholm vs. Idaho State (5th inn.)
Pinch-hit home run	3/25/2009, Katelyn Miller vs. Seattle
Home run in 3 straight games	2/13-2/14/2010
	Mary Claire Brenner vs. Creighton, Notre Dame and Southern Utah
Home run in 2 straight games	4/03-4/09/2010
	Ally Kutz vs. Oregon/Stanford
Back-to-back home runs	2/9/2012
	Erin Guzy and Desiree Beltran vs. BYU
Two triples in a game	5/16/2007, Cambria Miranda vs. Towson
Three doubles in a game	Never
Two doubles in a game	3/26/2012, Erin Guzy vs. Oregon
Hit for the cycle	Never
Four hits in a game	3/21/2009, Ally Kutz vs. UIC
Drove in seven runs	4/13/1999, Tarrah Beyster vs. St. Mary's
Drove in six runs	2/9/2012, Paige Hall vs. BYU
Drove in five runs	2/11/2012, Lea Cavestany vs. Nebraska
Scored four runs	5/12/2007, Mia Longfellow vs. Stanford
Walkoff hit (non-HR)	2/23/2012, Lea Cavestany vs. Iowa State (single)
Walkoff RBI (non-hit)	3/25/2012, Elizabeth Santana vs. Oregon (bases loaded HBP)

Pitching

Threw a no-hitter	4/22/2003, Monica Hoffman vs. Portland State (W, 9-0; 6 Inn.)
Threw a combined no- hitter	2/10/2011, Marina Demore and Paige Hall vs. Appalachian State (W, 8-0; 5 Inn.)
Threw a perfect game	2/11/2011, Paige Hall vs. Western Michigan (W, 8-0; 6 Inn.)
Threw a shutout	5/11/12, Marina Demore vs. No. 16 Arizona
Threw a complete game	5/11/12, Marina Demore vs. No. 16 Arizona
Had 16 strikeouts	5/21/2005, Brianne McGowan vs. Wisconsin (16)
Had 15 strikeouts	5/21/2005, Brianne McGowan vs. Wisconsin (16)
Had 14 strikeouts	5/21/2005, Brianne McGowan vs. Wisconsin (16)
Had 13 strikeouts	5/2/2010, Marina Demore vs. Washington (13)
Had 12 strikeouts	5/2/2010, Marina Demore vs. Washington (13)
Had 11 strikeouts	2/17/2012, Tina Andreana vs. San Diego State (11)
Had 10 strikeouts	2/17/2012, Tina Andreana vs. San Diego State (11)

Team

Won 10 straight games	2006 (28)
Won 15 straight games	2006 (28)
Won 20 straight games	2006 (28)
Extra-Innings victory	4/10/2012, No. 23 Oregon State 4, No. 3 Arizona State 2 (9)
Extra-Innings loss	4/21/2012, No. 9 Washington 7, No. 24 Oregon State 6 (9)
Was shut out	4/15/2012, No. 15 Stanford 8, Oregon State 0
Was no-hit	4/24/2010, Arizona 8, Oregon State 0
Defeated a ranked opponent	5/11/2012, No. 24 Oregon State 4, No. 16 Arizona 0
Mercy-ruled a ranked opponent	2/11/2012, Oregon State 11, No. 20 Nebraska 3



2012 Oregon State Softball

Game-By-Game Results

Record: 34-21

Home: 7-6

Away: 8-9

Neutral: 19-6

Pac-12: 9-14

Date	Opposing team	Score	OSU R-H-E	Opp. R-H-E	Inns	Overall	Pac-12	Pitcher of record	Attend	Time
1 Feb. 9	vs. BYU	W 22-5	22-15-1	5-8-4	5	1-0	0-0	Demore (W, 1-0)	194	2:14
1 Feb. 9	vs. Idaho State	W 16-3	16-11-1	3-3-2	5	2-0	0-0	Hall (W, 1-0)	313	2:12
1 Feb. 10	vs. #23 Georgia Tech	8-9 L	8-11-0	9-11-4	7	2-1	0-0	Andreana (L, 0-1)	-	2:49
1 Feb. 10	vs. McNeese State	2-3 L	2-4-2	3-3-0	(8)	2-2	0-0	Demore (L, 1-1)	211	1:54
1 Feb. 11	vs. #20 Nebraska	W 11-3	11-9-1	3-4-4	6	3-2	0-0	Andreana (W, 1-1)	323	2:24
2 Feb. 17	vs. UC Santa Barbara	W 6-0	6-9-1	0-5-2	7	4-2	0-0	Demore (W, 2-1)	247	1:55
2 Feb. 17	at San Diego State	6-7 L	6-9-1	7-9-2	(9)	4-3	0-0	Andreana (L, 1-2)	248	3:00
2 Feb. 18	vs. Notre Dame	W 3-2	3-4-2	2-4-1	7	5-3	0-0	Demore (W, 3-1)	177	1:30
2 Feb. 18	at San Diego	W 7-2	7-7-0	2-5-4	7	6-3	0-0	Hall (W, 2-0)	199	2:19
2 Feb. 19	vs. Central Florida	W 2-1	2-5-2	1-2-2	7	7-3	0-0	Hall (W, 3-0)	357	1:41
3 Feb. 23	vs. Iowa State	W 5-4	5-9-0	4-10-0	7	8-3	0-0	Hall (W, 4-0)	257	2:18
3 Feb. 23	vs. New Mexico	6-10 L	6-8-3	10-10-1	7	8-4	0-0	Andreana (L, 1-3)	345	2:33
3 Feb. 24	vs. Ohio State	W 4-3	4-10-4	3-7-0	7	9-4	0-0	Andreana (W, 2-3)	399	1:59
3 Feb. 24	vs. Iowa	W 2-1	2-3-1	1-5-1	(8)	10-4	0-0	Demore (W, 4-1)	423	2:02
3 Feb. 26	vs. Colorado State	W 4-2	4-7-0	2-8-1	7	11-4	0-0	Hall (W, 5-0)	313	2:02
Feb. 27	vs. Maine	W 4-0	4-6-0	0-3-3	7	12-4	0-0	Demore (W, 5-1)	175	1:31
Feb. 27	vs. Maine	W 13-0	13-11-0	0-2-4	5	13-4	0-0	Feickert (W, 1-0)	101	1:28
4 March 2	vs. Indiana	W 4-3	4-7-0	3-5-0	7	14-4	0-0	Demore (W, 6-1)	413	1:28
4 March 2	vs. Northwestern	W 5-3	5-8-4	3-5-2	7	15-4	0-0	Andreana (W, 3-3)	413	2:10
4 March 3	vs. Michigan State	W 11-6	11-10-1	6-7-0	7	16-4	0-0	Hall (W, 6-0)	359	2:20
4 March 3	at Cal State Fullerton	W 5-2	5-9-2	2-3-0	7	17-4	0-0	Andreana (W, 4-3)	1,274	2:08
4 March 4	vs. Florida International	1-4 L	1-2-1	4-7-0	7	17-5	0-0	Hall (L, 6-1)	363	1:45
5 March 8	vs. #23 North Carolina	W 8-1	8-9-1	1-8-1	7	18-5	0-0	Andreana (W, 5-3)	338	1:44
5 March 8	vs. Long Beach State	W 12-2	12-8-0	2-8-1	7	19-5	0-0	Demore (W, 7-1)	338	2:11
5 March 9	vs. Pittsburgh	W 3-2	3-7-3	2-5-0	7	20-5	0-0	Hall (W, 7-1)	213	1:50
5 March 10	vs. Michigan State	W 5-2	5-6-0	2-3-1	7	21-5	0-0	Hall (W, 8-1)	347	1:49
5 March 10	vs. Notre Dame	1-8 L	1-2-1	8-9-2	7	21-6	0-0	Andreana (L, 5-4)	437	1:40
March 11	vs. Harvard	2-3 L	2-5-1	3-6-2	7	21-7	0-0	Andreana (L, 5-5)	211	2:05
* March 24	#15 OREGON	2-8 L	2-2-0	8-8-2	7	21-8	0-1	Andreana (L, 5-6)	583	2:20
* March 25	#15 OREGON	W 5-4	5-8-1	4-7-1	(8)	22-8	1-1	Hall (W, 9-1)	437	2:38
* March 26	#15 OREGON	W 7-1	7-10-0	1-3-2	7	23-8	2-1	Hall (W, 10-1)	213	1:57
March 28	at Cal State Northridge	W 13-1	13-13-0	1-3-1	5	24-8	2-1	Feickert (W, 2-0)	189	1:44
March 28	at Cal State Northridge	W 5-1	5-9-1	1-3-1	7	25-8	2-1	Hall (W, 11-1)	189	1:44
* March 30	at #14 UCLA	4-8 L	4-6-2	8-8-1	7	25-9	2-2	Demore (L, 7-2)	1,026	2:18
* March 31	at #14 UCLA	0-8 L	0-2-1	8-6-0	5	25-10	2-3	Andreana (L, 5-7)	1,082	2:00
* April 1	at #14 UCLA	W 7-5	7-9-1	5-8-1	7	26-10	3-3	Feickert (W, 3-0)	1,184	2:37
* April 10	#3 ARIZONA STATE	W 4-2	4-7-2	2-9-1	(9)	27-10	4-3	Hall (W, 12-1)	400	4:52
* April 10	#3 ARIZONA STATE	2-3 L	2-8-0	3-6-4	7	27-11	4-4	Hall (L, 12-1)	392	1:53
* April 13	at #15 Stanford	4-8 L	4-7-0	8-10-0	7	27-12	4-5	Andreana (L, 5-8)	339	2:25
* April 14	at #15 Stanford	0-7 L	0-4-0	7-7-0	7	27-13	4-6	Feickert (L, 3-1)	407	1:51
* April 15	at #15 Stanford	0-8 L	0-4-0	8-8-0	5	27-14	4-7	Andreana (L, 5-9)	573	1:16
* April 20	#9 WASHINGTON	W 4-3	4-3-0	3-7-4	7	28-14	5-7	Andreana (W, 6-9)	467	2:21
* April 21	#9 WASHINGTON	6-7 L	6-8-1	7-11-0	(9)	28-15	5-8	Demore (L, 7-3)	519	2:47
* April 22	#9 WASHINGTON	W 3-2	3-4-2	2-7-0	7	29-15	6-8	Andreana (W, 7-9)	533	1:59
April 24	PORTLAND STATE	W 2-0	2-8-1	0-2-0	7	30-15	6-8	Andreana (W, 8-9)	117	1:23
April 24	PORTLAND STATE	W 3-2	3-8-1	2-5-0	7	31-15	6-8	Hall (W, 13-2)	117	1:44
* April 27	at Utah	W 10-2	10-11-0	2-5-2	7	32-15	7-8	Hall (W, 14-2)	295	2:25
* April 28	at Utah	6-8 L	6-11-0	8-9-2	7	32-16	7-9	Demore (L, 7-4)	325	2:28
* April 29	at Utah	W 5-4	5-8-0	4-8-0	7	33-16	8-9	Andreana (W, 9-9)	296	2:06
* May 4	#1 CALIFORNIA	1-9 L	1-2-3	9-5-0	5	33-17	8-10	Andreana (L, 9-10)	333	1:32
* May 5	#1 CALIFORNIA	2-4 L	2-5-1	4-5-3	7	33-18	8-11	Demore (L, 7-5)	421	2:01
* May 6	#1 CALIFORNIA	1-4 L	1-4-1	4-3-1	7	33-19	8-12	Hall (L, 14-3)	697	2:03
* May 10	at #16 Arizona	4-12 L	4-6-2	12-15-1	6	33-20	8-13	Andreana (L, 9-11)	2,388	2:18
* May 11	at #16 Arizona	W 4-0	4-9-0	0-4-1	7	34-20	9-13	Demore (W, 8-5)	2,680	2:09
* May 12	at #16 Arizona	1-3 L	1-5-0	3-7-0	7	34-21	9-14	Demore (L, 8-6)	2,256	1:58

(1) - Kajikawa Classic (Tempe, Ariz.); (2) - Campbell/Cartier Classic (San Diego, Calif.); (3) - Cathedral City Classic (Cathedral City, Calif.); (4) - DeMarini Invitational (Fullerton, Calif.); (5) - Long Beach State Invitational (Lakewood, Calif.)

* = Pac-12 game; All Times Pacific And Subject To Change; Home games in **Bold**; () extra inning game



2012 Oregon State Softball

2012 Softball Overall Statistics

Record: 34-21

Home: 7-6

Away: 8-9

Neutral: 19-6

Pac-12: 9-14

No Player	AVG	GP	GS	AB	R	H	2B	3B	HR	RBI	TB	SLG%	BB	HBP	SO	GDP	OB%	SF	SH	SB	ATT	PO	A	E	FLD%
4 Santana, Elizabeth	.349	55	55	175	35	61	6	3	5	36	88	.503	24	4	18	2	.438	0	2	7	7	87	123	8	.963
24 Gilmore, Dani	.313	55	55	166	42	52	6	2	9	33	89	.536	34	8	29	1	.445	3	0	13	14	86	6	1	.989
6 Guzy, Erin	.307	55	55	153	21	47	10	0	3	26	66	.431	29	1	20	0	.418	1	2	1	2	322	20	5	.986
13 Beltran, Desiree	.293	54	53	140	23	41	6	0	7	30	68	.486	9	18	13	3	.405	1	8	0	0	49	96	11	.929
7 Bouska, Hannah	.277	54	48	155	32	43	4	1	0	21	49	.316	16	1	32	0	.349	0	9	11	12	45	7	5	.912
32 Cavestany, Lea	.255	55	54	153	29	39	7	0	5	30	61	.399	19	2	29	1	.345	0	1	7	9	66	0	2	.971
22 Hall, Paige	.252	55	55	151	15	38	4	0	6	29	60	.397	22	1	30	0	.349	1	1	0	0	4	12	1	.941
16 Brenner, Mary Claire	.239	35	10	46	3	11	1	0	1	8	15	.326	4	2	12	1	.327	0	0	0	0	7	1	0	1.000
1 Garcia, Ya	.237	55	55	118	20	28	0	0	0	8	28	.237	16	2	35	0	.338	0	9	6	8	127	76	8	.962
9 Kutz, Ally	.206	55	54	136	14	28	5	0	4	25	45	.331	12	4	24	1	.286	2	7	2	3	281	27	5	.984

14 Batayola, Isabelle	.333	23	0	3	11	1	0	0	0	0	1	.333	0	0	0	0	.333	0	0	2	2	2	0	1	.667
2 Doremus, Maggie	.300	47	0	10	9	3	0	0	0	1	3	.300	0	1	3	0	.364	0	0	2	3	17	1	0	1.000
20 Niehus, Bailee	.250	4	0	4	0	1	0	0	0	1	1	.250	0	0	2	0	.250	0	0	0	0	0	0	0	.000
44 Chandler, Nikki	.000	29	1	12	6	0	0	0	0	2	0	.000	3	0	5	0	.200	0	0	2	2	7	20	1	.964
25 Richardson, Emily	.000	11	1	7	2	0	0	0	0	1	0	.000	2	0	3	1	.222	0	0	0	0	1	2	0	1.000
17 Bundy, Madison	.000	38	0	2	21	0	0	0	0	0	0	.000	0	0	1	0	.000	0	0	5	6	0	0	0	.000
55 Andreana, Tina	.000	2	2	0	0	0	0	0	0	0	0	.000	0	0	0	0	.000	0	0	0	0	0	11	4	.733
8 Demore, Marina	.000	5	3	0	0	0	0	0	0	0	0	.000	0	0	0	0	.000	0	0	0	0	2	16	1	.947
99 Feickert, Aryn	.000	1	1	0	0	0	0	0	0	0	0	.000	0	0	0	0	.000	0	0	0	0	1	3	0	1.000
Totals	.275	55	55	1431	283	393	49	6	40	251	574	.401	190	44	256	10	.375	8	39	58	68	1104	421	53	.966
Opponents	.246	55	55	1398	215	344	66	7	40	198	544	.389	186	41	268	2	.349	12	32	33	43	1082	417	71	.955

LOB - Team (351), Opp (356). DPs turned - Team (20), Opp (25). CI - Team (2), Kutz 2. IBB - Team (1), Santana 1. Picked off - Bouska 1.

(All games Sorted by Earned run avg)

No Player	ERA	W	L	APP	GS	CG	SHO	CBO	SV	IP	H	R	ER	BB	SO	2B	3B	HR	AB	B/Avg	WP	HBP	BK	SFA	SHA
22 Hall, Paige	2.62	14	3	37	1	0	0	0	5	88.1	78	44	33	34	70	13	1	9	333	.234	4	12	0	2	6
8 Demore, Marina	2.97	8	6	30	16	4	2	1	2	117.2	99	58	50	54	102	18	5	14	434	.228	5	7	0	3	11
99 Feickert, Aryn	3.57	3	1	17	9	1	1	1	0	51.0	52	28	26	22	22	10	1	9	189	.275	1	3	1	2	5
55 Andreana, Tina	4.35	9	11	34	29	6	1	0	2	111.0	115	85	69	76	74	25	0	8	442	.260	9	19	0	5	10
Totals	3.37	34	21	55	55	11	5	1	9	368.0	344	215	177	186	268	66	7	40	1398	.246	19	41	1	12	32
Opponents	3.90	21	34	55	55	25	3	1	3	360.2	393	283	201	190	256	49	6	40	1431	.275	27	44	3	8	39

PB - Team (10), Kutz 10, Opp (13). Pickoffs - Team (3), Kutz 2, Hall 1, Opp (1). SBA/ATT - Kutz (32-41), Andreana (14-15), Hall (10-14), Demore (8-11), Feickert (1-3), Gilmore (1-1).

(All games Sorted by Fielding pct)

No Player	C	PO	A	E	FLD%	DPs	SBA	CSB	SBA%	PB	CI
2 Doremus, Maggie	18	17	1	0	1.000	1	0	0	-	0	0
16 Brenner, Mary Claire	8	7	1	0	1.000	0	0	0	-	0	0
99 Feickert, Aryn	4	1	3	0	1.000	0	1	2	.333	0	0
25 Richardson, Emily	3	1	2	0	1.000	0	0	0	-	0	0
24 Gilmore, Dani	93	86	6	1	.989	0	1	0	1.000	0	0
6 Guzy, Erin	347	322	20	5	.986	14	0	0	-	0	0
9 Kutz, Ally	313	281	27	5	.984	4	32	9	.780	10	2
32 Cavestany, Lea	68	66	0	2	.971	0	0	0	-	0	0
44 Chandler, Nikki	28	7	20	1	.964	0	0	0	-	0	0
4 Santana, Elizabeth	218	87	123	8	.963	13	0	0	-	0	0
1 Garcia, Ya	211	127	76	8	.962	12	0	0	-	0	0
8 Demore, Marina	19	2	16	1	.947	1	8	3	.727	0	0
22 Hall, Paige	17	4	12	1	.941	0	10	4	.714	0	0
13 Beltran, Desiree	156	49	96	11	.929	5	0	0	-	0	0
7 Bouska, Hannah	57	45	7	5	.912	1	0	0	-	0	0
55 Andreana, Tina	15	0	11	4	.733	0	14	1	.933	0	0
14 Batayola, Isabelle	3	2	0	1	.667	0	0	0	-	0	0
Totals	1578	1104	421	53	.966	20	33	10	.767	10	2
Opponents	1570	1082	417	71	.955	25	58	10	.853	13	0

